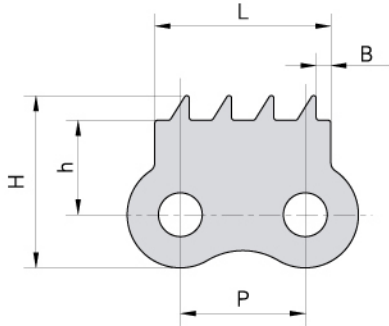
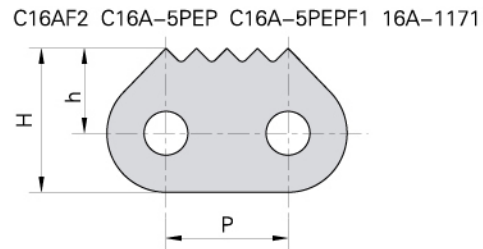
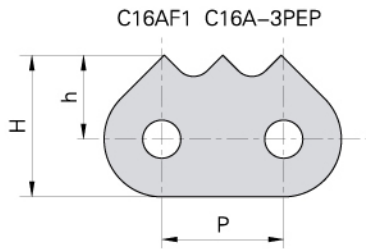


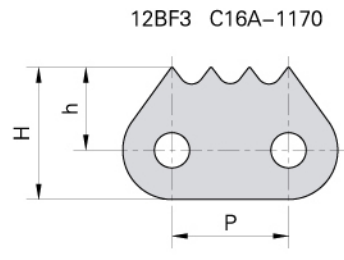
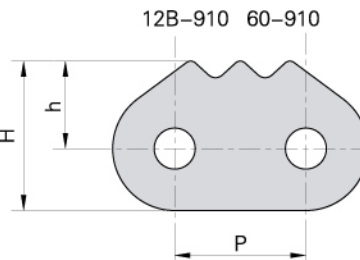
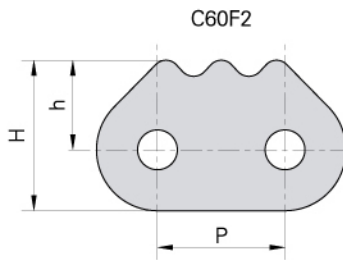
Sharp top chains Verzahnte Laschen



Donghua Chain No. <i>Donghua Ketten Nr.</i>	P	h	H	B	L
	mm	mm	mm	mm	mm
08B-940	12.7	9.6	17.5	1.5	17.9

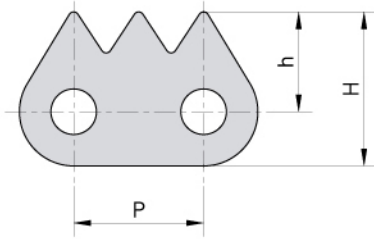


Donghua Chain No. <i>Donghua Ketten Nr.</i>	P	h	H
	mm	mm	mm
16A-1171	25.4	16.00	26.40
C16A-3PEP	25.4	17.40	29.00
C16A-5PEP	25.4	17.40	29.00
C16A-5PEPF1	25.4	17.30	29.50
C16AF1	25.4	17.50	29.50
C16AF2	25.4	17.50	29.50



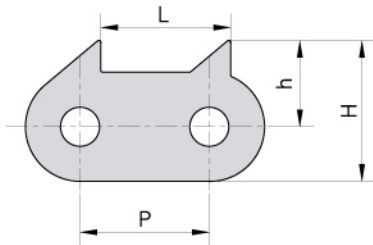
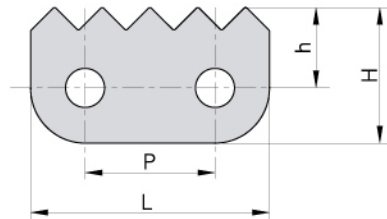
Donghua Chain No. <i>Donghua Ketten Nr.</i>	P	h	H
	mm	mm	mm
12BF3	19.05	13.50	21.50
12B-910	19.05	13.70	21.70
60-910	19.05	12.70	21.70
C60F2	19.05	13.38	22.48
C16A-1170	25.40	16.50	28.00

Sharp top chains Verzahnte Laschen



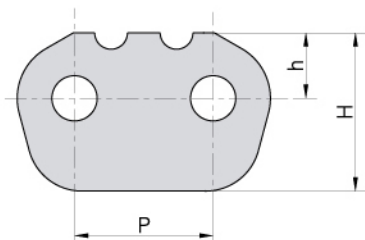
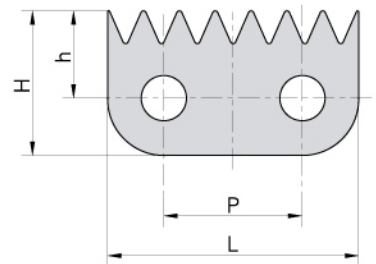
Donghua Chain No.	P	h	H
<i>Donghua Ketten Nr.</i>	mm	mm	mm
08BF71	12.7	9.75	15.05

Donghua Chain No.	P	h	H	L
<i>Donghua Ketten Nr.</i>	mm	mm	mm	mm
10AF42	15.875	11.5	19.0	30.9
12B-911	19.050	11.9	20.0	35.0



Donghua Chain No.	P	h	H	L
<i>Donghua Ketten Nr.</i>	mm	mm	mm	mm
C12B-9010	19.05	13.0	21.0	19.05
C12B-940	19.05	13.2	22.3	19.75

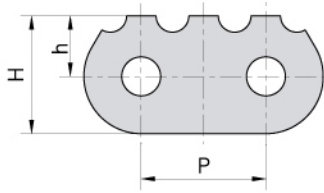
Donghua Chain No.	P	h	H	L
<i>Donghua Ketten Nr.</i>	mm	mm	mm	mm
16B-1187	25.4	16.0	26.5	46



Donghua Chain No.	P	h	H
<i>Donghua Ketten Nr.</i>	mm	mm	mm
16BF45	25.4	12.0	29.0

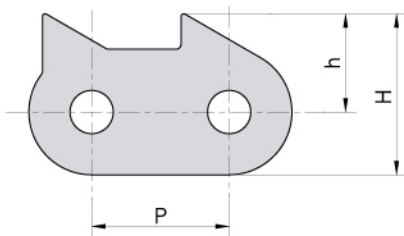
Sharp top chains

Verzahnte Laschen

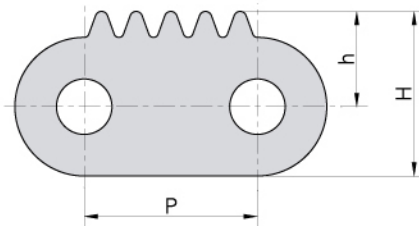


Donghua Chain No. <i>Donghua Ketten Nr.</i>	P	h	H
	mm	mm	mm
60-911	19.05	9.25	18.00
60-912	19.05	9.20	17.95

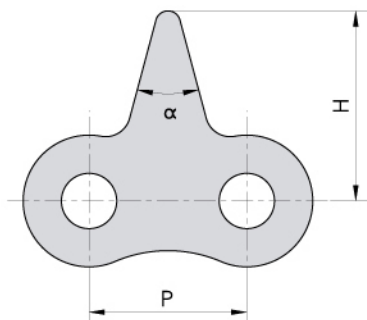
C16A-1160



Donghua Chain No. <i>Donghua Ketten Nr.</i>	P	h	H
	mm	mm	mm
C16A-1160	25.4	18	29.5



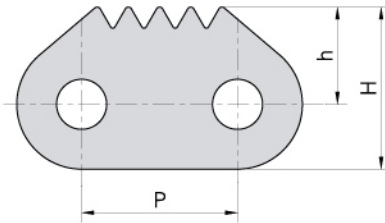
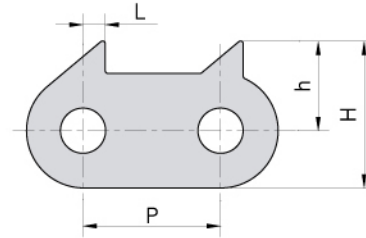
Donghua Chain No. <i>Donghua Ketten Nr.</i>	P	h	H
	mm	mm	mm
LL1044F1	15.875	8.73	15.08



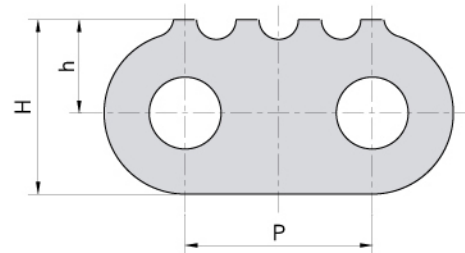
Donghua Chain No. <i>Donghua Ketten Nr.</i>	P	H	α
	mm	mm	
06BF39	9.525	11.00	30°
08AF10	12.700	15.60	30°
08BF30	12.700	14.50	30°
08BF38	12.700	14.60	40°
08BF5	12.700	15.30	30°
08BF51	12.700	14.00	50°
08BF56	12.700	14.40	30°
08BF86	12.700	15.00	50°
08BSSF11	12.700	14.60	40°
10AF7	15.875	15.88	21°
10BF40	15.875	17.40	25°
12B-1STCF1	19.050	19.00	30°
16AF44	25.400	31.80	50°
20A-1STCF1	31.750	53.00	82.1°

Sharp top chains Verzahnte Laschen

Donghua Chain No. Donghua Ketten Nr.	P	h	H	L
	mm	mm	mm	mm
C16B-1160	25.4	10.5	27.5	4.8
C16B-1161	25.4	10.5	27.5	6.0

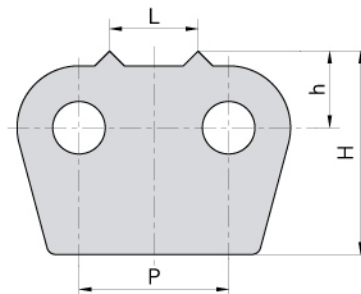


Donghua Chain No. Donghua Ketten Nr.	P	h	H
	mm	mm	mm
C20BF9	31.75	19.8	33.0



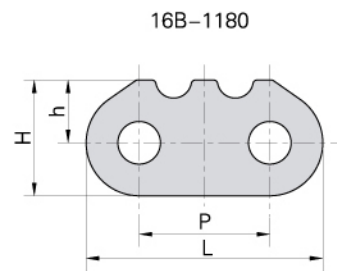
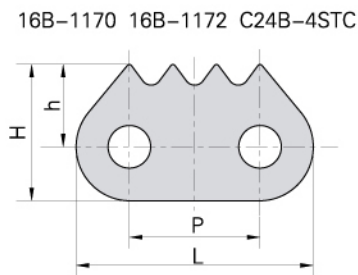
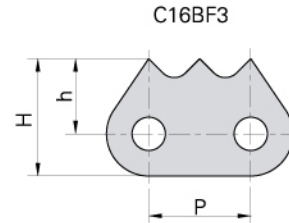
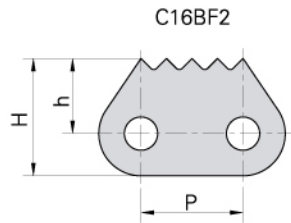
Donghua Chain No. Donghua Ketten Nr.	P	h	H
	mm	mm	mm
24B-1810	38.1	19	35.5
120F6	38.1	21	38.5

Donghua Chain No. Donghua Ketten Nr.	P	h	H	L
	mm	mm	mm	mm
32BF4	50.8	26	70.0	30

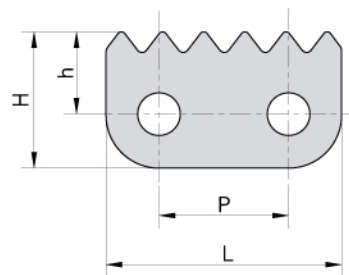


Sharp top chains

Verzahnte Laschen



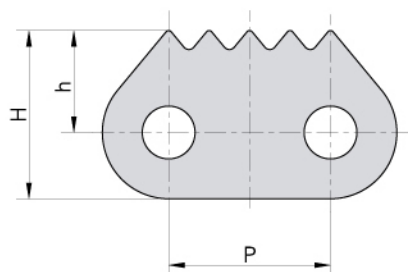
Donghua Chain No. <i>Donghua Ketten Nr.</i>	P	L	h	H
	mm	mm	mm	mm
C16BF2	25.4	46.4	18.7	29.2
C16BF3	25.4	46.4	18.7	29.2
16B-1170	25.4	46.1	16.0	26.5
16B-1180	25.4	46.0	12.2	22.5
16B-1172	25.4	46.1	15.0	25.5
C24B-4STC	38.1	70.4	18.3	35.0



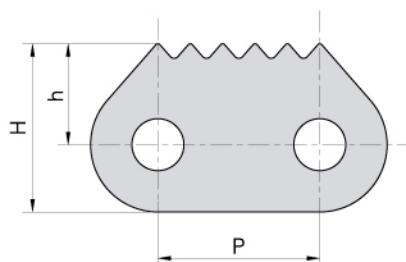
Donghua Chain No. <i>Donghua Ketten Nr.</i>	P	L	h	H
	mm	mm	mm	mm
16B-1185	25.4	46.0	16.0	26.5
16B-6STC	25.4	46.0	16.0	26.5

Sharp top chains

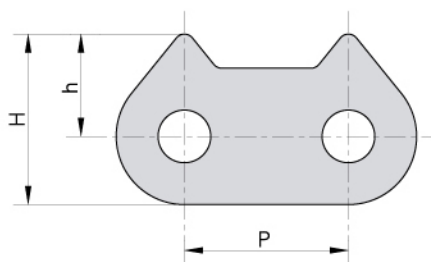
Verzahnte Laschen



Donghua Chain No. <i>Donghua Ketten Nr.</i>	P	h	H
	mm	mm	mm
C12BF56	19.05	13.0	22.0
16BF24	25.40	16.0	26.4
16BF29	25.40	15.9	26.4
C24B-1831	38.10	22.5	39.0
24A-1-STA	38.10	21.0	38.5
C12BF56-STC	19.50	13.0	22.0

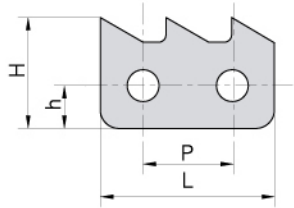


Donghua Chain No. <i>Donghua Ketten Nr.</i>	P	h	H
	mm	mm	mm
20BF8	31.75	19.8	33.0
20B-1310	31.75	19.8	33.0
C24B-6STCF1	38.10	23.5	40.0



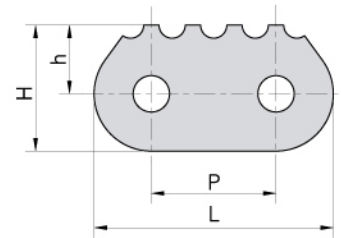
Donghua Chain No. <i>Donghua Ketten Nr.</i>	P	h	H
	mm	mm	mm
20B-1350	31.75	19.8	33.0

Sharp top chains Verzahnte Laschen

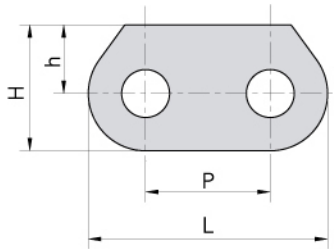


Donghua Chain No. Donghua Ketten Nr.	P	L	h	H
	mm	mm	mm	mm
20AF1	31.75	57.2	14.75	35.84

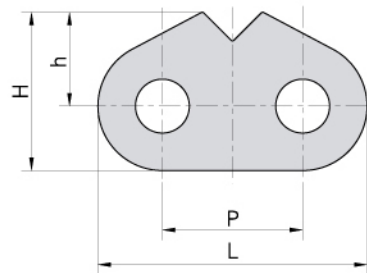
Donghua Chain No. Donghua Ketten Nr.	P	L	h	H
	mm	mm	mm	mm
120-1802	38.1	73.1	21.0	38.5



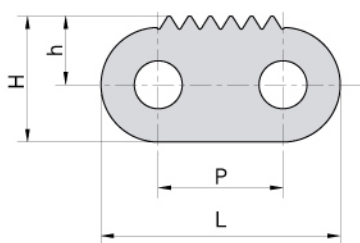
24B-1805



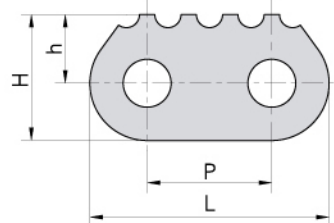
24B-1807



C24B-1820



24B-1809

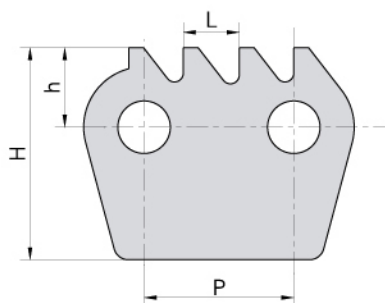


Donghua Chain No. Donghua Ketten Nr.	P	L	h	H
	mm	mm	mm	mm
24B-1805	38.1	73.1	21.0	38.5
24B-1807	38.1	73.1	25.5	43.0
24B-1809	38.1	73.1	21.0	38.5
C24B-1820	38.1	73.1	21.0	38.5

Sharp top chains

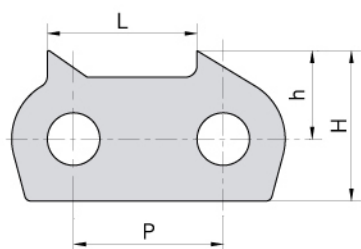
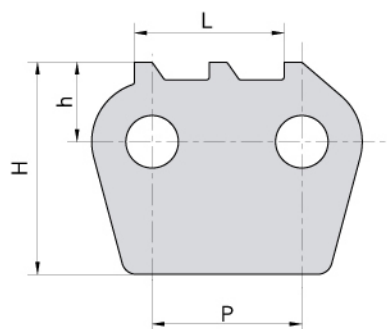
Verzahnte Laschen

FÖRDERKETTEN



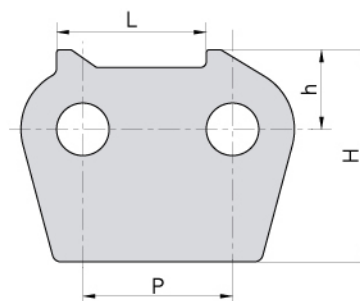
Donghua Chain No. <i>Donghua Ketten Nr.</i>	P	h	H	L
	mm	mm	mm	mm
32B-1875	50.8	27	72.0	19.0
32BF20-1875	50.8	30	74.0	13.5

Donghua Chain No. <i>Donghua Ketten Nr.</i>	P	h	H	L
	mm	mm	mm	mm
32B-1876	50.8	27	72.0	50.8



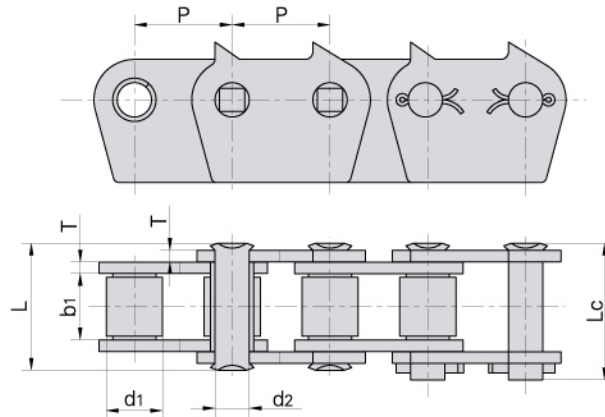
Donghua Chain No. <i>Donghua Ketten Nr.</i>	P	h	H	L
	mm	mm	mm	mm
32B-1877	50.8	30	51	50.8

Donghua Chain No. <i>Donghua Ketten Nr.</i>	P	h	H	L
	mm	mm	mm	mm
32B-1878	50.8	27	72	50.8



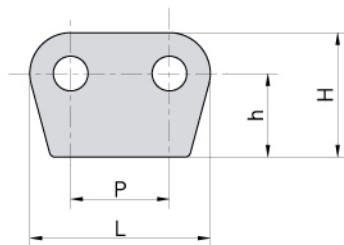
Sharp top chains

Förderketten mit verzahnten Laschen

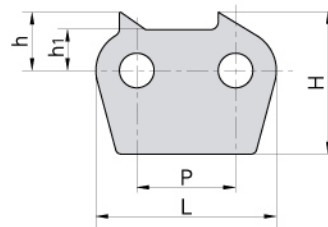


Donghua Chain No. Donghua Ketten Nr.	Pitch	Roller diameter	Width between inner plates	Pin diameter	Pin length		Plate thickness	Ultimate tensile strength	Average tensile strength	Weight per meter
	Teilung	Rollen-durchmesser	Innere Breite	Bolzen-durchmesser	Bolzen-länge		Laschen-dicke	Min. Bruchkraft	Durchschn. Bruchkraft	Gewicht
	P	d1 max	b1 min	d2 max	L max	Lc max	T max	Q min	Q ₀	q
	mm	mm	mm	mm	mm	mm	mm	kN/LB	kN	kg/m
32B-1-1872	50.8	29.21	33.0	17.81	66.0	71.0	6.0	250.0/56818	275.0	13.54

32B-1872

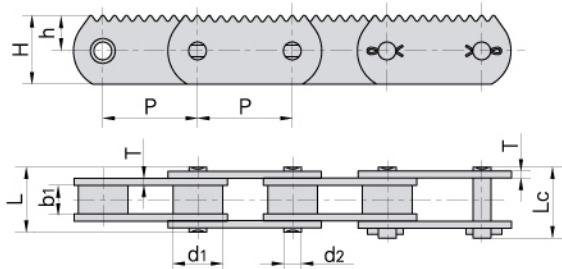


32B-1874 32B-1900F1
32BF15 C32B-1874F1



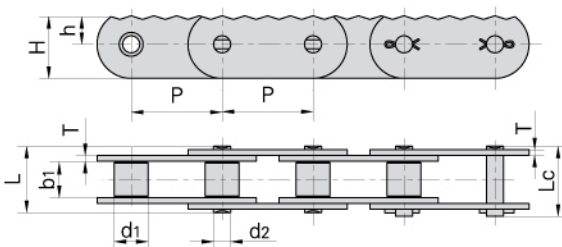
Donghua Chain No. Donghua Ketten Nr.	P	L	h ₁	h	H
	mm	mm	mm	mm	mm
32B-1872	50.8	92.8	-	43.0	64.0
32B-1874	50.8	92.8	21.0	30.0	73.0
32B-1900F1	50.8	92.8	21.0	30.0	75.0
32BF15	50.8	91.8	20.0	45.0	75.0
C32B-1874F1	50.8	92.8	21.0	40.0	83.0

Sharp top chains Förderketten mit verzahnten Laschen



Donghua Chain No. Donghua Ketten Nr.	P	h	H
	mm	mm	mm
P80	80.0	30	58

Donghua Chain No. Donghua Ketten Nr.	Pitch	Roller diameter	Width between inner plates	Pin diameter	Pin length		Plate thickness	Ultimate tensile strength	Average tensile strength	Weight per meter
	Teilung	Rollen-durchmesser	Innere Breite	Bolzen-durchmesser	Bolzen-länge		Laschen-dicke	Min. Bruchkraft	Durchschn. Bruchkraft	Gewicht
	P	d1 max	b1 min	d2 max	L max	Lc max	T max	Q min	Q0	q
	mm	mm	mm	mm	mm	mm	mm	kN/LB	kN	kg/m
P80	80.0	42.0	24.0	15.0	55.0	60.0	6.0	250.0/56818	275.0	11.3

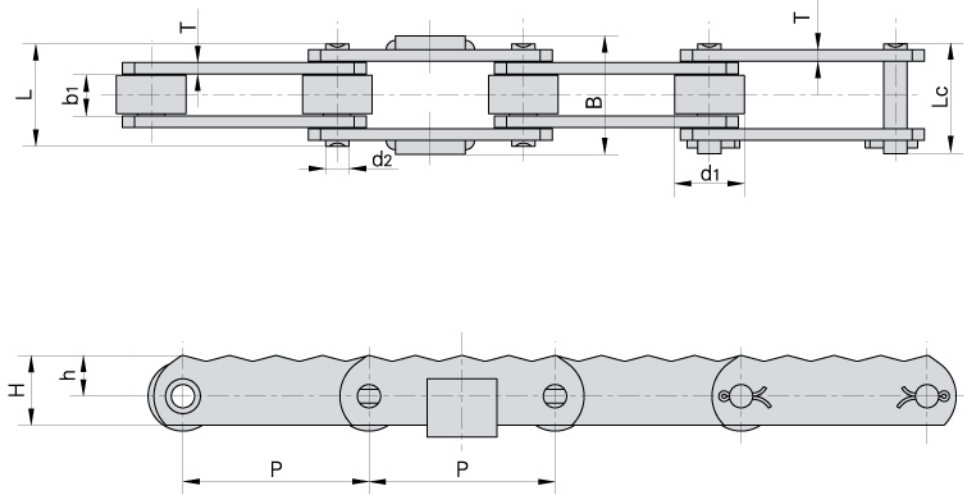


Donghua Chain No. Donghua Ketten Nr.	P	h	H
	mm	mm	mm
P80F3	80.0	25	55
P80F32	80.0	20	40

Donghua Chain No. Donghua Ketten Nr.	Pitch	Roller diameter	Width between inner plates	Pin diameter	Pin length		Plate thickness	Ultimate tensile strength	Average tensile strength	Weight per meter
	Teilung	Rollen-durchmesser	Innere Breite	Bolzen-durchmesser	Bolzen-länge		Laschen-dicke	Min. Bruchkraft	Durchschn. Bruchkraft	Gewicht
	P	d1 max	b1 min	d2 max	L max	Lc max	T max	Q min	Q0	q
	mm	mm	mm	mm	mm	mm	mm	kN/LB	kN	kg/m
P80F3	80.0	30.0	32.0	15.0	58.6	62.6	5.0	98.0/20909	107.0	9.12
P80F32	80.0	30.0	30.0	15.0	63.0	72.0	6.0	112/25194	123.2	7.28

Sharp top chains

Förderketten mit verzahnten Laschen



Donghua Chain No. Donghua Ketten Nr.	P	h	H	B
	mm	mm	mm	mm
P80F2	80.0	17.5	30.0	51

Donghua Chain No. Donghua Ketten Nr.	Pitch	Roller diameter	Width between inner plates	Pin diameter	Pin length		Plate thickness	Ultimate tensile strength	Average tensile strength	Weight per meter
	Teilung	Rollen-durchmesser	Innere Breite	Bolzen-durchmesser	Bolzen-länge		Laschen-dicke	Min. Bruchkraft	Durchschn. Bruchkraft	Gewicht
	P	d1 max	b1 min	d2 max	L max	Lc max	T max	Q min	Q0	q
	mm	mm	mm	mm	mm	mm	mm	kN/LB	kN	kg/m
P80F2	80.0	30.0	18.0	10.0	44.6	48.3	5.0	61.74/14030	70.0	4.15