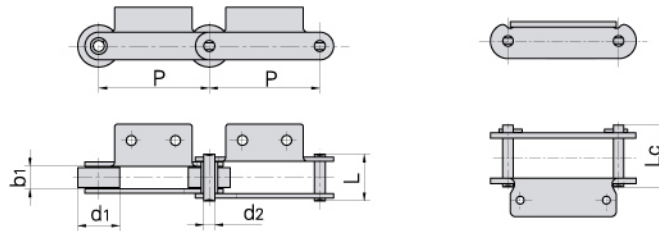


Conveyor chain with attachments

Förderketten mit Befestigungslaschen



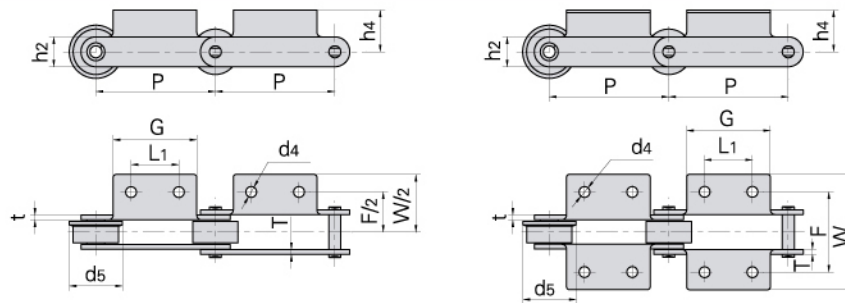
Donghua Chain No. Donghua Ketten Nr.	Pitch	Roller diameter	Width between inner plates	Pin diameter	Pin length		Ultimate tensile strength	Average tensile strength	Weight per meter
	Teilung	Rollen-durchmesser	Innere Breite	Bolzen-durchmesser	L max	Lc max	Min. Bruchkraft	Durchschn. Bruchkraft	Gewicht
	P	d1 max	b1 min	d2 max	mm	mm	Q min	Q0	q
	mm	mm	mm	mm	mm	mm	kN/LB	kN	kg/m
*P28	28.575	11.68	16.00	7.870	-	32.4	50.0/11364	55.0	2.66
*P28F1	28.575	11.68	16.13	7.870	-	32.4	50.0/11364	55.0	2.60
P38F10K1	38.000	15.88	13.00	8.280	32.5	35.5	55.0/12364	60.5	2.60
P38F11K1	38.000	15.88	13.00	8.280	30.5	33.5	45.0/10116	49.5	2.30
P38.1F2	38.100	22.50	13.00	8.000	29.5	33.3	40.0/9091	44.0	2.42
P39.75A1	39.750	17.25	22.00	7.800	40.5	44.3	47.0/10566	51.7	3.10
P41.3F9A2	41.300	22.00	11.00	9.000	28.6	31.6	40.0/8992	44.0	2.30
P42F2	42.000	11.00	13.00	6.000	30.0	32.5	50.0/11248	55.0	1.85
P42.5	42.500	15.88	15.75	7.920	32.7	36.5	56.7/12886	62.0	3.40
P44.45F5	44.450	25.40	16.51	7.920	36.2	38.9	35.0/7874	38.5	3.85
P44.45F7A1	44.450	28.58	15.00	9.530	34.5	38.7	45.0/10116	49.5	3.80
P46	46.000	16.00	16.00	8.000	36.0	39.0	55.0/12373	60.5	3.23
P50F16	50.000	24.90	10.70	7.800	26.6	28.8	33.0/7418	36.3	2.22
P50.8F22A1-F	50.800	32.00	15.00	11.700	39.0	43.0	50.0/11240	55.0	6.13
P75F6	75.000	16.00	16.00	8.000	-	41.0	32.0/7200	35.2	2.44
P75F8A2	75.000	31.80	16.00	8.000	-	41.0	32.0/7200	35.2	3.52
P75F8A2-F	75.000	30.00	16.00	8.000	-	41.0	32.0/7200	35.2	3.80
P75F20A1	75.000	40.00	22.00	12.000	47.0	52.0	90.0/20232	99.0	6.81
P76.2F1	76.200	31.75	15.00	14.200	-	44.2	60.0/13500	66.0	4.45
P78.11F8	78.110	31.80	37.10	15.000	-	83.5	100.0/22727	110.0	12.05
P78.11F9	78.110	31.75	38.10	15.875	-	90.0	90.0/20246	99.0	11.28
P80F4	80.000	30.00	15.00	13.900	42.5	46.5	86.0/19346	95.0	3.97
P80F4-P	80.000	45.00	15.00	13.900	42.5	46.5	86.0/19345	94.6	5.67
P100F1	100.000	42.00	23.00	9.530	52.0	54.3	86.7/19704	95.0	6.06
P100F2	100.000	36.00	18.00	9.530	47.0	49.3	86.7/19704	95.0	4.60
P100F3	100.000	29.00	30.00	14.500	-	71.0	95.0/21591	105.0	9.46
P100F4	100.000	40.00	22.00	11.300	-	53.5	65.0/14773	72.0	5.13
P100F5	100.000	22.00	22.00	11.300	-	53.5	65.0/14773	72.0	3.90
P100F12	100.000	45.00	37.00	12.000	64.0	67.0	150.0/34091	165.0	10.30
P100F15	100.000	38.00	25.80	10.700	-	57.0	45.0/10227	50.0	5.25
P100F33	100.000	40.00	27.00	11.300	-	64.8	100.0/22727	110.0	6.80
P100F41A2	100.000	45.00	25.40	12.700	-	63.8	80.0/17997	88.0	8.26
P100F50	100.000	36.00	29.00	15.000	70.0	76.0	200.0/44992	220.0	13.93

*Bushing chain: d1 in the table indicate the external diameter of the bushing.

*Buchsenketten: In dieser Tabelle zeigt d1 den Außendurchmesser der Buchsen.

Conveyor chain with attachments

Förderketten mit Befestigungsglaschen



Donghua Chain No. Donghua Ketten Nr.	P	L1	G	F	W	h4	h2	d4	t/T	d5
	mm	mm	mm	mm	mm	mm	mm	mm	mm	mm
*P28	28.575	28.58	51.00	46.74	61.20	13.70	22.23	8.75	3.10	-
*P28F1	28.575	28.58	50.80	46.80	61.86	12.70	22.23	9.02	3.10	-
P38F10K1	38.000	△	30.00	49.00	79.00	16.50	21.00	8.40	3.5	-
P38F11F1	38.000	△	30.00	47.00	77.00	16.50	21.00	8.40	3.00	-
P38.1F2	38.100	△	28.00	56.00	76.00	17.20	19.00	9.00	3.00	-
P39.75A1	39.750	△	61.00	62.10	94.10	16.50	21.25	11 × 8	3.50	-
P41.3F9A2	41.300	12.00	24.00	36.20	48.20	17.00	21.00	5.50	3.00	-
P42F2	42.000	△	35.00	40.00	76.00	12.80	17.00	6.00	3.00	-
P42.5	42.500	19.00	38.00	53.50	70.00	19.50	22.00	7.00	3.25	-
P44.45F5	44.450	△	34.93	57.16	74.46	19.05	19.05	8.00	3.80	-
P44.45F7A1	44.450	△	22.00	66.00	84.80	12.80	25.60	7.00	3.00	-
P46	46.000	△	38.00	54.00	82.80	18.00	22.00	6.00	4.00	-
P50F16	50.000	△	41.30	45.00	61.40	36.00	20.00	6.50	3.00	-
P50.8F22A1-F	50.800	△	45.00	75.00	110.40	20.00	26.40	9.00	4.50	40.00
P75F6	75.000	30.00	55.00	60.00	92.00	20.00	22.00	10.00	3.00	-
P75F8A2	75.000	30.00	55.00	60.00	92.00	20.00	22.00	10.00	3.20	-
P75F8A2-F	75.000	30.00	55.00	60.00	92.00	20.00	22.00	10.00	3.20	38.00
P75F20A1	75.000	△	55.00	64.00	92.00	25.00	32.00	M8	4.50	50.00
P76.2F1	76.200	31.00	58.00	75.40	107.00	21.25	29.00	10.50	4.50	-
P78.11F8	78.110	30.00	65.00	120.00	150.00	35.00	38.10	12.00	7.90	-
P78.11F9	78.110	38.10	116.60	104.60	133.30	31.75	38.10	14.30	7.90	-
P80F4	80.000	40.00	70.20	57.40	87.40	22.95	27.10	8.50	5.60/4.15	-
P80F4-P	80.000	40.00	70.20	57.40	87.40	22.95	27.10	8.50	5.60/4.15	-
P100F1	100.000	78.00	96.00	73.00	103.00	17.50	32.00	7.00	5.00	-
P100F2	100.000	40.00	70.00	68.00	98.00	17.50	32.00	9.00	5.00	-
P100F3	100.000	40.00	70.00	100.00	128.00	28.00	38.10	12.00	6.00	-
P100F4	100.000	40.00	65.00	70.00	94.00	22.00	32.00	10.00	4.50	-
P100F5	100.000	40.00	65.00	70.00	94.00	22.00	32.00	10.00	4.50	-
P100F12	100.000	60.00	90.00	98.00	128.00	34.00	40.00	11.50	5.00	64.00
P100F15	100.000	29.85	65.00	75.00	115.60	20.00	28.00	9.00	4.80	-
P100F33	100.000	40.00	65.00	78.30	102.30	24.30	32.00	10.00	6.00	50.00
P100F41A2	100.000	40.00	70.00	80.00	126.00	25.00	31.80	12.00	6.30	60.00
P100F50	100.000	40.00	70.00	156.00	196.00	43.00	60.00	9.00	8.00	-

△ Attachments with 1 hole

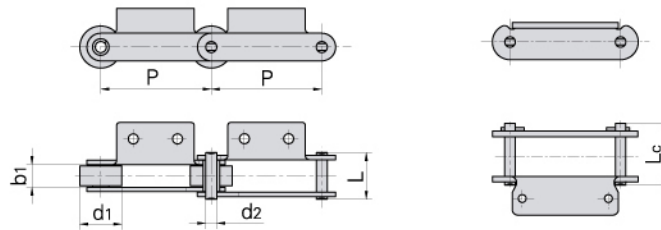
△ Befestigungsglaschen mit einem Loch

*Bushing chain: d1 in the table indicate the external diameter of the bushing.

*Buchsenketten: In dieser Tabelle zeigt d1 den Außendurchmesser der Buchsen.

Conveyor chain with attachments

Förderketten mit Befestigungslaschen



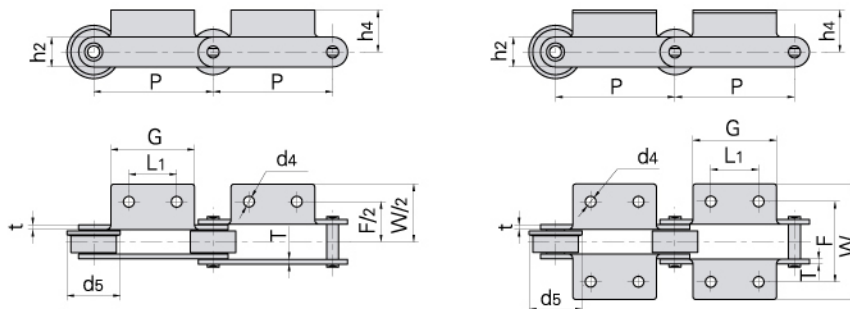
Donghua Chain No. Donghua Ketten Nr.	Pitch	Roller diameter	Width between inner plates	Pin diameter	Pin length		Ultimate tensile strength	Average tensile strength	Weight per meter
	Teilung	Rollen-durchmesser	Innere Breite	Bolzen-durchmesser	L max	Lc max	Min. Bruchkraft	Durchschn. Bruchkraft	Gewicht
	P	d1 max	b1 min	d2 max	L	Lc	Q min	Q0	q
	mm	mm	mm	mm	mm	mm	kN/LB	kN	kg/m
P100F75	100.0	26.00	22.00	10.700	-	55.0	45.0/10116	50.0	4.75
P100F82A1	100.0	31.80	16.10	8.000	-	41.0	32.0/7200	35.2	3.07
P100F93	100.0	40.00	22.00	11.300	-	59.5	86.0/19333	94.6	8.07
P100F94K1	100.0	47.60	26.00	27.000	61.0	70.0	160.0/35993	176.0	12.9
P100F95A2	100.0	32.00	14.00	11.100	32.5	36.0	60.0/13500	66.0	3.11
P100F99K2	100.0	40.00	22.00	11.100	48.4	53.4	65.0/14612	71.5	5.54
P100F104	100.0	40.00	22.00	11.300	-	60.7	146.0/32822	160.6	7.33
P100F108K2	100.0	40.00	22.00	11.300	-	53.5	65.0/14612	71.5	5.80
P100F109A2	100.0	45.00	21.00	14.000	48.0	53.0	50.0/11240	55.0	6.94
P100F101A2	100.0	22.20	24.00	11.100	57.5	62.7	70.0/15736	77.0	5.50
*P101.6F1	101.6	25.00	55.00	16.000	-	110.0	60.0/13636	66.0	11.90
P101.6F9	101.6	31.75	15.00	14.200	-	44.2	66.7/15159	73.0	8.40
*P101.6F17K2	101.6	25.40	55.60	15.880	-	115.0	180.0/40492	198.0	12.40
*P101.6F18A2	101.6	31.75	15.00	10.000	37.0	41.0	40.0/9000	44.0	3.66
P101.6F21	101.6	38.10	53.80	15.875	-	112.2	180.0/40492	198.0	14.90
P101.6F25	101.6	36.50	50.80	19.050	-	112.0	200.0/44992	220.0	18.10
P101.6F30A2	101.6	38.00	22.00	10.000	-	52.8	100.0/22727	110.0	5.19
P101.6F35	101.6	66.70	25.00	25.400	61.0	66.0	160.0/35993	176.0	15.73
P101.6F36	101.6	57.15	33.40	15.880	-	92.0	180.0/40492	198.0	14.33
P101.6F39	101.6	57.15	33.30	16.000	82.0	89.0	127.0/28570	140.0	17.70
P101.6F40A2	101.6	38.10	21.00	10.000	-	52.0	50.0/11248	55.0	4.69
P101.6F41K1	101.6	44.50	27.00	11.300	-	67.0	78.0/17546	86.0	10.20
P101.6F43A2	101.6	50.00	16.00	16.000	49.0	53.5	145.0/32620	160.0	7.95
P101.6F54K1	101.6	57.15	33.30	16.000	-	89.0	177.8/39998	197.4	17.86
P101.6F56K2	101.6	32.00	54.50	16.000	-	115.0	180.0/40493	199.8	16.51
P101.6F57K3	101.6	57.15	31.75	15.900	-	67.4	166.0/37343	191.2	13.90
P101.6F62K1	101.6	57.15	33.30	16.000	-	89.0	177.8/39998	197.4	18.83
P101.6F69K3	101.6	38.10	23.80	12.700	-	65.1	100.0/22496	110.8	8.34
P101.6F76	101.6	57.15	31.56	16.000	56.2	62.0	82.6/18582	91.7	11.57
P101.6F80A2	101.6	44.50	31.60	15.900	-	81.0	130.0/29245	144.3	11.36
P101.6F84A2	101.6	50.80	30.23	11.180	-	62.0	80.36/18078	89.2	9.04
P117	117.0	35.00	50.00	17.000	-	102.0	150.0/33744	166.5	13.40
P120	120.0	50.00	28.00	12.000	54.0	58.0	160.0/35993	176.0	8.14

*Bushing chain: d1 in the table indicate the external diameter of the bushing.

*Buchsenketten: In dieser Tabelle zeigt d1 den Außendurchmesser der Buchsen.

Conveyor chain with attachments

Förderketten mit Befestigungslaschen



Donghua Chain No. <i>Donghua Ketten Nr.</i>	P	L1	G	F	W	h4	h2	d4	t/T	d5
	mm	mm	mm	mm	mm	mm	mm	mm	mm	mm
P100F75	100.0	29.85	65.0	68.0	112.0	20.00	28.00	12 × 9	4.80	–
P100F82A1	100.0	△	65.0	60.0	92.0	20.00	22.00	10.00	3.20	42.0
P100F93	100.0	40.00	70.0	100.0	124.0	30.00	32.00	100.00	6.00	–
P100F94K1	100.0	△	35.0	85.0	116.0	38.50	55.00	13.00	7.00/5.00	–
P100F95A2	100.0	30.00	51.0	76.0	104.0	18.00	30.00	9.00	3.00	–
P100F99K2	100.0	40.00	65.0	70.0	104.0	22.00	32.00	9.50	4.80	–
P100F104	100.0	40.00	65.0	70.0	104.0	23.60	32.00	10.00	6.30	–
P100F108K2	100.0	40.00	65.0	70.0	94.0	35.00	32.00	10.00	4.50	–
P100F109A2	100.0	40.00	60.0	110.0	130.0	17.50	35.00	6.40	5.00	–
P100F101A2	100.0	41.00	65.0	86.0	134.0	24.50	33.00	9.00	6.00	–
*P101.6F1	101.6	44.00	73.0	136.0	165.0	30.00	40.00	11.00	10.00	–
P101.6F9	101.6	31.00	65.0	75.4	107.0	21.25	29.00	10.50	4.50	–
*P101.6F17K2	101.6	44.50	84.0	136.0	172.0	25.40	38.00	11.00	10.00	–
*P101.6F18A2	101.6	30.00	60.0	76.0	124.0	19.00	25.00	10.50	4.00	–
P101.6F21	101.6	44.50	141.2	134.9	177.8	28.70	38.10	14.00	9.65	–
P101.6F25	101.6	44.45	152.4	140.7	171.6	41.28	44.45	13.50	9.50	–
P101.6F30A2	101.6	40.00	70.0	80.0	107.0	22.00	30.00	11.50	5.00	–
P101.6F35	101.6	50.00	70.0	107.0	127.0	40.00	51.00	10.00	6.00	–
P101.6F36	101.6	△	50.8	98.4	142.9	32.00	38.10	14.30	9.50	–
P101.6F39	101.6	△	50.8	101.6	146.4	31.75	38.10	14.20	9.65	–
P101.6F40A2	101.6	40.00	70.0	80.0	108.0	22.00	25.00	12.00	5.00	–
P101.6F41K1	101.6	△	70.0	100.0	128.0	28.00	28.60	12.00	6.30	–
P101.6F43A2	101.6	32.00	56.0	80.0	112.0	20.00	40.00	9.50	6.00	–
P101.6F54K1	101.6	–	50.8	101.6	146.4	31.75	38.10	14.20	9.65	–
P101.6F56K2	101.6	45.00	81.0	142.2	179.2	32.50	45.00	11 × 15	10.00	–
P101.6F57K3	101.6	50.80	82.6	101.6	132.5	36.50	44.45	10.3/15	6.40	–
P101.6F62K1	101.6	–	50.8	101.6	146.4	31.75	41.30	14.20	9.65	–
P101.6F69K3	101.6	38.10	68.0	69.9	103.2	22.20	33.00	10.30	6.40	–
P101.6F76	101.6	60.00	76.2	70.0	101.2	35.00	38.10	5.00	4.00	70.0
P101.6F80A2	101.6	40.00	80.0	110.0	146.0	35.00	38.10	15.00	8.00	–
P101.6F84A2	101.6	50.80	79.5	101.6	133.6	28.70	31.80	9.60	4.80	–
P117	117.0	90.00	160.0	136.0	176.0	35.00	40.00	14.00	8.00	–
P120	120.0	50.00	75.0	82.0	119.6	20.00	40.00	7.00	5.00	59.0

△ Attachments with 1 hole

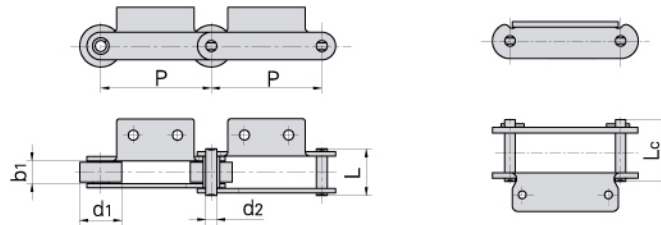
△ Befestigungslaschen mit einem Loch

*Bushing chain: d1 in the table indicate the external diameter of the bushing.

*Buchsenketten: In dieser Tabelle zeigt d1 den Außendurchmesser der Buchsen.

Conveyor chain with attachments

Förderketten mit Befestigungslaschen

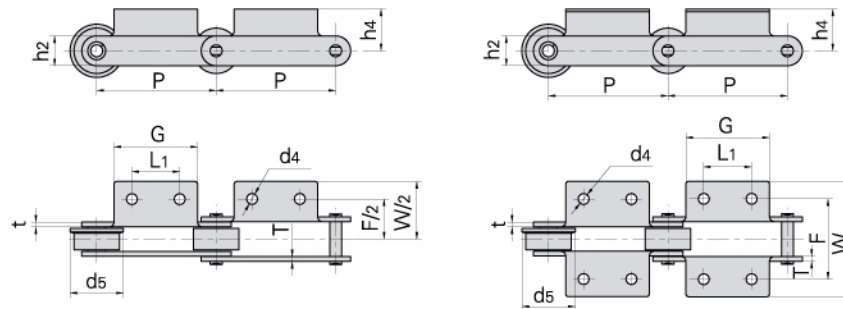


Donghua Chain No. Donghua Ketten Nr.	Pitch	Roller diameter	Width between inner plates	Pin diameter	Pin length		Ultimate tensile strength	Average tensile strength	Weight per meter
	Teilung	Rollen-durchmesser	Innere Breite	Bolzen-durchmesser	Bolzen-länge		Min. Bruchkraft	Durchschn. Bruchkraft	Gewicht
	P	d1 max	b1 min	d2 max	L max	Lc max	Q min	Q0	q
	mm	mm	mm	mm	mm	mm	kN/LB	kN	kg/m
P120A2F4	120.0	32.00	37.00	12.70	69.1	–	140.0/31494	155.4	9.00
P125F2	125.0	32.00	18.50	8.00	39.0	–	120.0/26995	132.0	2.66
P125F9A2	125.0	45.00	25.00	14.60	55.5	60.0	50.0/11248	55.0	2.58
P125F2K2–P	125.0	32.00	18.50	8.00	–	40.0	50.0/11248	55.0	2.83
P130K2F2	130.0	80.00	40.00	24.00	77.6	88.3	200.0/44992	218.0	13.90
P150F2	150.0	40.00	27.00	11.10	57.0	61.0	124.6/28318	137.0	5.40
P150F4	150.0	50.00	37.00	16.00	77.5	82.5	170.0/38636	187.0	10.90
P150F6	150.0	50.00	30.00	12.00	49.5	–	86.7/19704	95.0	7.27
P150F11A2	150.0	46.70	21.50	15.00	46.6	51.5	130.0/29245	142.0	7.13
P150F13A2	150.0	47.60	21.50	15.00	50.6	55.5	130.0/29245	142.0	8.52
P150F14A2	150.0	47.60	21.50	19.00	50.6	56.5	130.0/29245	142.0	8.59
P150F16A2	150.0	45.00	30.00	16.00	–	75.5	170.0/38243	187.0	8.56
P150F18	150.0	50.00	37.00	16.00	77.5	82.5	170.0/38243	187.0	14.49
RF10150RA2	150.0	50.80	30.00	14.50	69.0	–	113.0/25682	124.0	9.20
P150F21A2	150.0	57.48	35.91	19.05	–	79.0	150.0/33744	166.5	11.18
P150F26A2	150.0	44.50	30.00	14.50	–	69.0	113.0/25420	126.0	7.96
P150F32A2	150.0	44.50	27.00	11.30	–	67.0	78.0/17547	86.5	6.78
P150F31A2	150.0	50.00	27.00	12.00	–	70.0	150.0/33744	166.0	8.50
P152F	152.4	40.10	37.50	19.10	97.5	–	328.7/74704	378.0	15.88
P152F4	152.4	50.80	30.60	14.27	62.8	67.5	88.0/20000	100.0	9.24
P152F11	152.4	38.00	53.50	14.70	112.4	–	130.0/29245	142.0	12.60
P152F16	152.4	70.00	76.20	25.40	152.0	–	160.0/35993	176.0	41.50
P152F19	152.4	50.80	30.60	14.27	62.8	67.5	112.0/25195	123.2	9.24
P152F20	152.4	47.60	39.70	19.05	99.7	–	300.0/67487	330.0	18.33
P152F32K2	152.4	36.00	45.00	20.00	103.0	–	300.0/67487	330.0	14.93
P152F33	152.4	36.00	68.00	20.00	128.0	–	300.0/67487	330.0	16.50
P152F43	152.4	76.20	35.00	23.81	108.0	–	446.8/100510	513.5	27.60
P152F50	152.4	101.60	44.00	22.20	87.0	–	250.0/56240	275.0	26.70
P152F54	152.4	30.00	53.00	16.00	112.0	–	175.0/39380	193.0	11.10
P152F56	152.4	50.80	33.34	15.88	86.0	–	113.0/25420	124.3	10.70
RF6205MF6A2	152.4	65.00	37.10	15.90	88.0	–	158.0/35543	186.0	16.80
P152F42K2F1	152.4	63.50	34.90	19.00	93.0	–	152.0/34193	168.9	18.80
*P160F1	160.0	36.00	55.00	20.00	108.0	–	50.0/11364	55.0	14.50

*Bushing chain: d1 in the table indicate the external diameter of the bushing.

*Buchsenketten: In dieser Tabelle zeigt d1 den Außendurchmesser der Buchsen.

Conveyor chain with attachments Förderketten mit Befestigungslaschen



Donghua Chain No. Donghua Ketten Nr.	P	L1	G	F	W	h4	h2	d4	t/T	d5
	mm	mm	mm	mm	mm	mm	mm	mm	mm	mm
P120A2F4	120.0	65.0	100.0	96.00	118.00	44.50	48.00	11.00	6.00	-
P125F2	125.0	46.0	76.0	64.00	90.00	14.00	22.00	10.00	3.00	42.0
P125F9A2	125.0	30.0	60.0	90.00	128.00	35.00	35.00	11.00	6.00/5.00	55.0
P125F2K2-P	125.0	46.0	76.0	64.00	90.00	14.00	22.00	10.00	3.00	-
P130K2F2	130.0	55.0	95.0	102.00	144.00	47.50	60.00	11.00	6.00	-
P150F2	150.0	60.0	85.0	92.00	117.30	22.50	32.00	10.00	6.00	-
P150F4	150.0	60.0	85.0	120.00	150.00	33.00	43.00	14.00	8.00	-
P150F6	150.0	50.0	75.0	86.60	126.60	17.50	35.00	9×26	4.00	59.0
P150F11A2	150.0	36.0	60.0	163.50	189.60	40.15	39.70	10.60	5.00	-
P150F13A2	150.0	36.0	60.0	164.00	193.50	52.00	40.00	11.00	6.00	-
P150F14A2	150.0	36.0	60.0	164.00	193.50	52.00	40.00	11.00	6.00	-
P150F16A2	150.0	60.0	90.0	110.00	140.00	32.00	38.00	12.00	8.00	-
P150F18	150.0	60.0	85.0	120.00	150.00	33.00	43.00	M10	8.00	-
RF10150RA2	150.0	60.0	90.0	100.00	130.00	28.00	38.10	12.00	6.30	-
P150F21A2	150.0	26.0	45.7	100.40	129.40	58.50	44.45	10.90	6.40	-
P150F26A2	150.0	60.0	84.5	100.00	130.00	23.60	33.60	12.00	6.30	60.0
P150F32A2	150.0	60.0	90.0	100.00	128.00	28.00	28.60	12.00	6.30	55.0
P150F31A2	150.0	60.0	90.0	100.00	139.00	28.00	35.00	11.00	6.00	66.0
P152F	152.4	60.0	100.0	130.00	202.00	45.00	50.00	15.00	9.00	-
P152F4	152.4	60.0	100.0	110.00	140.00	32.00	38.00	15.00	6.00	65.0
P152F11	152.4	44.6	74.8	133.70	168.00	24.00	39.00	10.80	9.60/11.40	-
P152F16	152.4	63.5	178.5	184.15	241.15	47.65	63.50	20.70	12.70	-
P152F19	152.4	60.0	100.0	110.00	140.00	32.00	38.00	15.00	6.00	65.0
P152F20	152.4	-	76.2	120.65	172.30	41.30	50.80	17.50	9.50	-
P152F32K2	152.4	60.0	110.0	135.00	171.00	40.00	52.00	14.00	10.00	-
P152F33	152.4	60.0	110.0	158.00	194.00	40.00	52.00	14.00	10.00	-
P152F43	152.4	76.2	108.0	111.10	155.60	44.45	60.30	12.70	11.10	-
P152F50	152.4	63.5	102.0	101.60	135.00	37.50	65.00	13.50	6.00	-
P152F54	152.4	45.0	74.0	135.00	165.0	25.40	39.00	11.00	10.00	-
P152F56	152.4	50.8	76.2	101.60	133.40	28.60	38.10	11.10	8.00	-
RF6205MF6A2	152.4	60.0	100.0	120.00	158.00	38.00	45.00	15.00	8.00	85.0
P152F42K2F1	152.4	66.8	140.0	108.20	148.20	41.40	50.80	12.70	9.50	-
*P160F1	160.0	60.0	110.0	130.00	173.00	40.00	50.00	14.00	9.00	-

△ Attachments with 1 hole

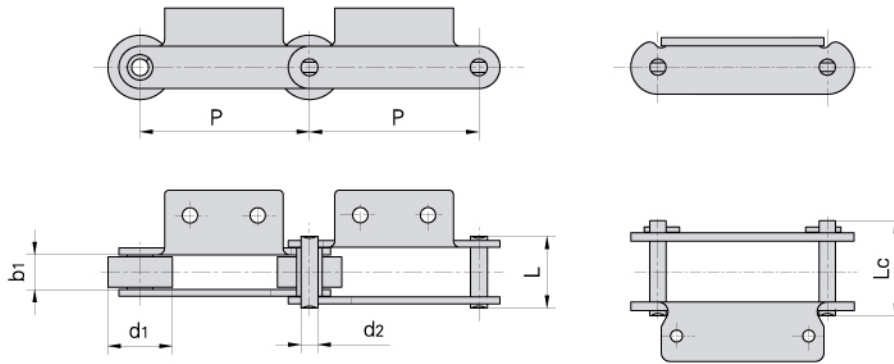
△ Befestigungslaschen mit einem Loch

*Bushing chain: d1 in the table indicate the external diameter of the bushing.

*Buchsenketten: In dieser Tabelle zeigt d1 den Außendurchmesser der Buchsen.

Conveyor chain with attachments

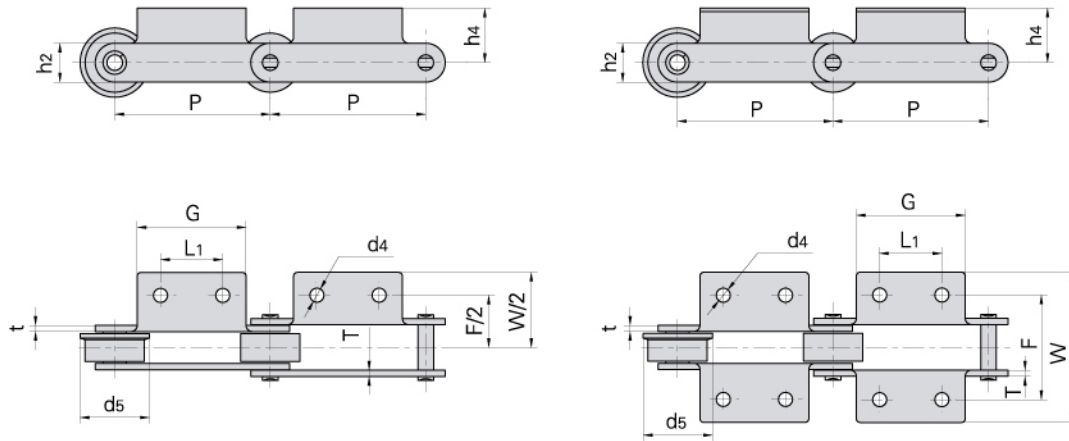
Förderketten mit Befestigungslaschen



Donghua Chain No. Donghua Ketten Nr.	Pitch	Roller diameter	Width between inner plates	Pin diameter	Pin length		Ultimate tensile strength	Average tensile strength	Weight per meter
	Teilung	Rollen-durchmesser	Innere Breite	Bolzen-durchmesser	Bolzen-länge		Min. Bruchkraft	Durchschn. Bruchkraft	Gewicht
	P mm	d1 max mm	b1 min mm	d2 max mm	L max mm	Lc max mm	Q min kN/LB	Q0 kN	q kg/m
P160F3	160.0	48.0	25.00	14.85	62.50	-	120.0/27272	132.0	7.10
P160F5	160.0	60.0	33.00	14.27	64.00	72.0	150.0/34091	165.0	8.00
P160F8	160.0	40.0	20.00	11.00	50.00	-	55.0/12500	61.0	4.58
P160F18	160.0	50.0	34.00	20.00	-	88.0	100.0/22496	109.5	14.93
P160F25	160.0	70.0	25.00	14.25	55.50	60.5	100.0/22496	109.5	7.65
P160F26	160.0	50.0	29.90	13.94	-	60.0	105.0/23620	115.5	6.41
P185	185.0	50.8	30.60	14.27	62.80	67.5	70.0/15909	77.0	8.42
P200F6	200.0	50.0	37.00	16.00	77.50	82.5	170.0/38243	188.7	9.69
P200F7	200.0	40.0	27.00	11.10	57.00	61.0	124.6/28030	137.0	9.78
P200F8	200.0	65.0	37.00	16.00	86.50	-	170.0/38243	188.7	15.23
P200F13	200.0	80.0	51.00	20.00	106.00	-	180.0/40492	198.0	26.10
P200F15	200.0	40.1	51.40	19.10	109.50	-	213.0/47916	234.3	12.60
P200F23	200.0	65.0	36.50	16.00	-	86.5	170.0/38243	188.7	11.57
P200F22	200.0	90.0	48.00	16.00	-	99.0	170.0/38243	188.7	19.60
P200F26A2	200.0	50.0	37.00	16.00	85.50	90.5	170.0/38243	188.7	11.08
P200F30	200.0	65.0	38.00	18.00	-	79.5	120.0/26995	130.8	10.80
RF12200A2-F-200	200.0	65.0	37.10	15.90	-	86.5	279.0/62763	306.9	14.20
P203.2F6	203.2	88.9	45.97	25.40	-	116.3	489.0/110005	528.1	37.00
RF10250RA2	250.0	50.8	30.00	14.50	69.00	-	113.0/25420	124.3	6.47
P250F25	250.0	50.0	30.00	14.00	-	81.3	170.0/38243	188.7	8.40

Conveyor chain with attachments

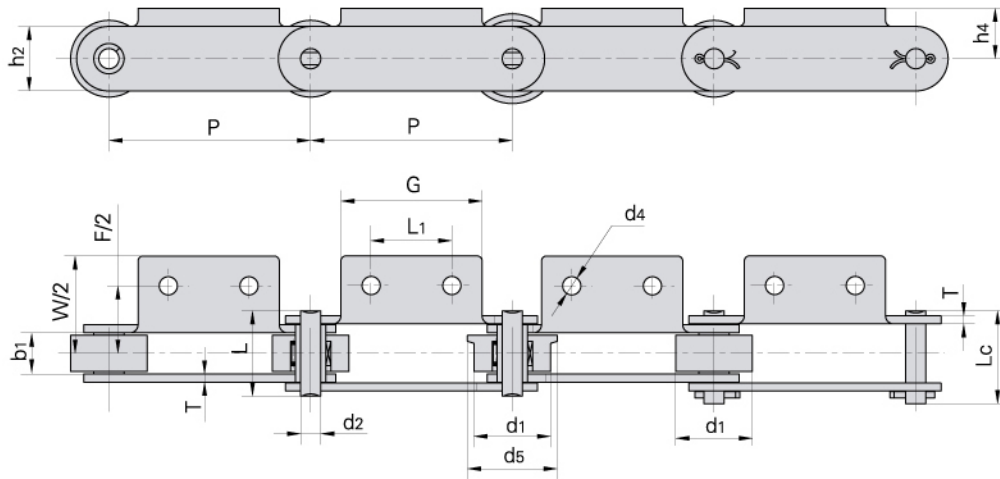
Förderketten mit Befestigungslaschen



Donghua Chain No. Donghua Ketten Nr.	P	L1	G	F	W	h4	h2	d4	t/T	d5
	mm	mm	mm	mm	mm	mm	mm	mm	mm	mm
P160F3	160.0	49.0	70.0	83.00	117.0	32.5	35.0	8.5	6.0	-
P160F5	160.0	35.0	70.0	110.00	166.0	38.7	40.0	14.0	5.6	-
P160F8	160.0	80.5	133.0	56.00	100.0	16.0	32.0	8.33x13.30	4.5	-
P160F18	160.0	60.0	110.0	110.00	153.0	40.0	50.0	15.0	9.0	-
P160F25	160.0	-	120.0	70.00	89.0	27.5	36.0	10.0	5.6	-
P160F26	160.0	30.0	50.0	94.00	124.0	35.0	40.0	10.0	4.0	65.0
P185	185.0	60.0	120.0	110.00	140.0	32.0	38.0	15.0	6.0	65.0
P200F6	200.0	81.5	120.0	120.00	150.0	33.0	43.0	14.0	8.0	-
P200F7	200.0	81.5	120.0	92.00	122.0	22.0	32.0	10.0	6.0	-
P200F8	200.0	80.0	120.0	200.00	238.0	38.0	43.0	15.0	8.0	80.0
P200F13	200.0	110.0	150.0	152.00	204.0	43.0	50.0	13.0	9.0	-
P200F15	200.0	80.0	120.0	150.00	200.0	43.0	50.8	15.0	9.5	-
P200F23	200.0	80.0	120.0	120.00	170.0	38.0	43.0	15.0	8.0	-
P200F22	200.0	80.0	120.0	212.00	250.0	38.0	43.0	15.0	8.0	100.0
P200F26A2	200.0	81.5	120.0	120.00	154.0	33.0	43.0	14.0	10.0	-
P200F30	200.0	65.0	100.0	119.00	159.0	30.0	50.0	12.5/18.5	6.0	-
RF12200A2-F-200	200.0	80.0	120.0	120.00	158.0	38.0	44.5	15.0	7.9	80.0
P203.2F6	203.2	114.3	152.4	131.83	192.0	54.1	69.8	17.5	12.7	-
RF10250RA2	250.0	80.0	120.0	100.00	130.0	28.0	38.1	12.0	6.3	-
P250F25	250.0	60.0	93.0	108.00	143.6	30.0	38.0	10.0	8.0	-

Conveyor chain with attachments

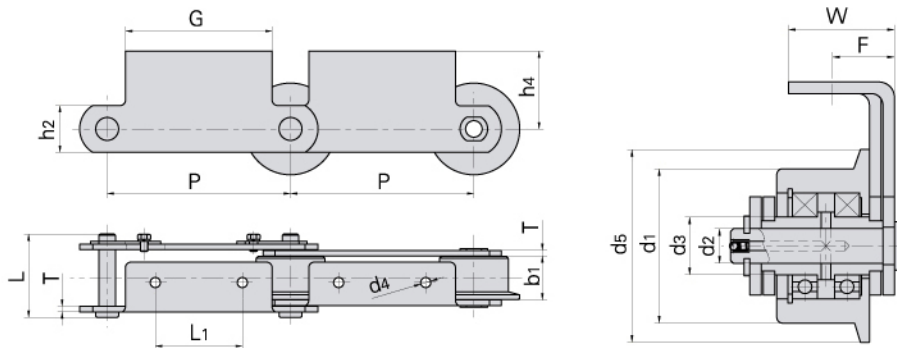
Förderketten mit Befestigungslaschen



Donghua Chain No. Donghua Ketten Nr.	Pitch	Roller diameter	Width between inner plates	Pin diameter	Pin length		Ultimate tensile strength	Average tensile strength	Weight per meter
	Teilung	Rollen-durchmesser	Innere Breite	Bolzen-durchmesser	Bolzen-länge		Min. Bruchkraft	Durchschn. Bruchkraft	Gewicht
	P	d1 max	b1 min	d2 max	L max	Lc max	Q min	Q0	q
	mm	mm	mm	mm	mm	mm	kN/LB	kN	kg/m
M56F4-P-100	100.0	38.0	20.5	10.00	42.3	46.1	56.0/12727	62.0	4.30
M56F7-P-100	100.0	38.0	17.0	10.00	38.8	42.6	56.0/12727	62.0	4.84
M56F9-P-100	100.0	38.0	20.5	10.00	46.3	50.1	88.2/20045	97.0	5.60
P100	100.0	50.0	29.9	13.94	60.0	-	160.0/36364	176.0	9.27
P100F4A2-F1	100.0	40.0	22.0	11.30	-	53.5	65.0/14612	71.5	5.52
P160	160.0	50.0	29.9	13.94	60.0	-	160.0/36364	176.0	7.23
P200F28	200.0	65.0	37.1	16.00	77.5	85.5	160.0/36364	176.0	14.10
P200F31	200.0	80.0	37.1	16.00	77.5	85.5	160.0/36364	176.0	18.10
P300	300.0	80.0	45.0	23.81	95.5	103.0	300.0/68181	320.0	24.32
P350	350.0	80.0	45.0	23.81	95.5	103.0	300.0/68181	320.0	23.60
P400F1	400.0	80.0	45.0	23.81	95.5	103.0	300.0/68181	320.0	22.67

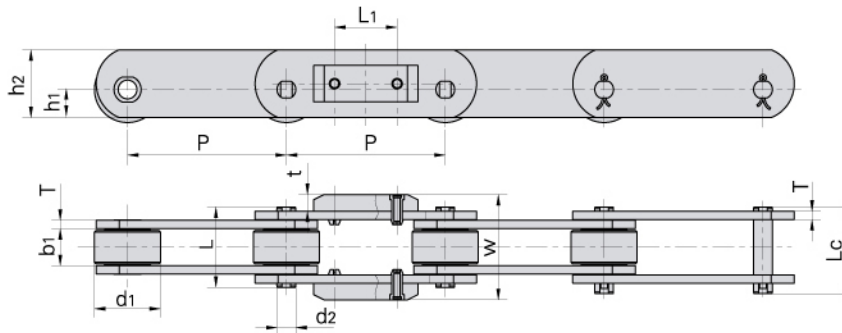
Donghua Chain No. Donghua Ketten Nr.	L1	G	F	W	h4	h2	d4	T	d5
	mm	mm	mm	mm	mm	mm	mm	mm	mm
	M56F4-P-100	40.0	70.0	68.5	98.50	25.0	25.0	9.0	4.0
M56F7-P-100	40.0	70.0	71.5	92.00	55.0	25.0	6.5	4.0	45.0
M56F9-P-100	40.0	70.0	67.5	96.58	25.0	32.0	9.0	5.0	44.5
P100	40.0	65.0	98.0	128.00	35.0	40.0	10.0	4.0	65.0
P100F4A2-F1	40.0	65.0	70.0	94.00	22.0	32.0	10.0	4.5	50.0
P160	85.0	115.0	94.0	124.00	35.0	40.0	10.0	4.0	65.0
P200F28	80.0	120.0	120.0	158.00	63.0	44.5	12.0	8.0	80.0
P200F31	80.0	140.0	120.0	158.00	85.0	44.5	M10	8.0	100.0
P300	200.0	250.0	150.0	190.00	105.0	60.0	13.0	10.0	100.0
P350	250.0	300.0	150.0	190.00	105.0	60.0	13.0	10.0	100.0
P400F1	300.0	350.0	150.0	190.00	105.0	60.0	15.0	10.0	100.0

Conveyor chain with attachments Förderketten mit Befestigungslaschen



Donghua Chain No. Donghua Ketten Nr.	Pitch	Roller diameter		Width between inner plates	Pin diameter	Pin length	Bush diameter	Plate depth	Plate thickness	Ultimate tensile strength
	Teilung	Rollen-durchmesser		Innere Breite	Bolzen-durchmesser	Bolzen-länge	Buchsen-durchmesser	Laschen-höhe	Laschen-dicke	Min. Bruchkraft
	P	d1 max	d5 max	b1 min	d2 max	L max	d3 max	h2 max	T max	Q min
	mm	mm	mm	mm	mm	mm	mm	mm	mm	kN/LB
M160F6-F-200	200.0	80.0	98.0	47.5	18.0	91.0	30.0	51.0	6.0	160.0/35993
M160F7-F-200	200.0	80.0	98.0	47.5	18.0	99.0	30.0	51.0	8.0	160.0/35993
M224F9-F-200	200.0	90.0	105.0	44.5	26.0	112.0	35.0	60.0	8.0	224.0/50390

Donghua Chain No. Donghua Ketten Nr.	P	L1	G	F	W	h4	d4
	mm	mm	mm	mm	mm	mm	mm
M160F6-F-200	200.0	95.0	160.0	32.0	55.0	85.0	11.0
M160F7-F-200	200.0	95.0	160.0	36.0	59.0	85.0	11.0
M224F9-F-200	200.0	120.0	160.0	35.0	50.0	85.0	12.0

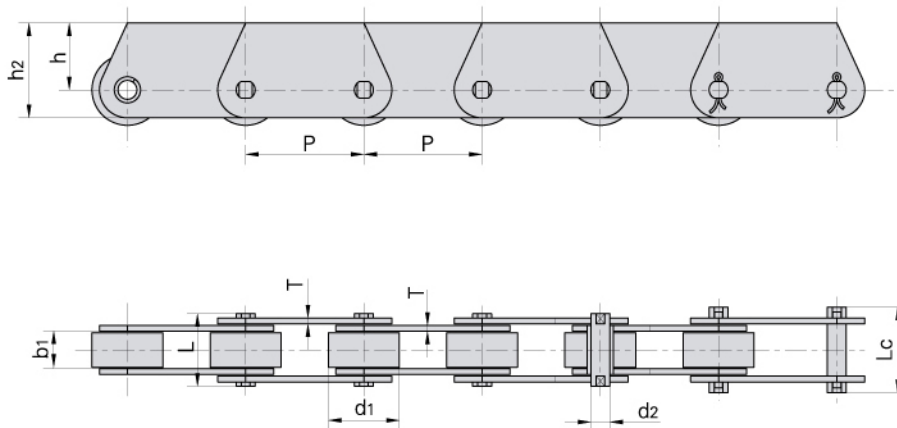


Donghua Chain No. Donghua Ketten Nr.	P	L1	W	t
	mm	mm	mm	mm
P152F13	152.4	60.0	101.0	16.0

Donghua Chain No. Donghua Ketten Nr.	Pitch	Roller diameter	Width between inner plates	Pin diameter	Pin length		Plate depth		Plate thickness	Ultimate tensile strength
	Teilung	Rollen-durchmesser	Innere Breite	Bolzen-durchmesser	Bolzen-länge	Lc	Laschen-höhe	Laschen-dicke	Min. Bruchkraft	
	P	d1 max	b1 min	d2 max	L max	Lc max	h1 max	h2 max	T max	Q min
	mm	mm	mm	mm	mm	mm	mm	mm	mm	kN/LB
P152F13	152.4	63.4	35.0	18.0	77.0	83.0	26.9	65.0	8.0	160.0/36364

Conveyor chain with attachments

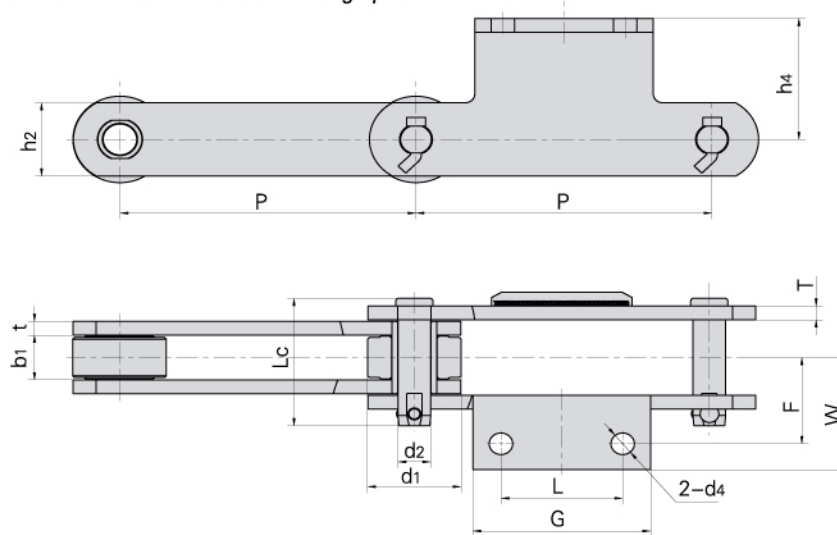
Förderketten mit Befestigungslaschen



Donghua Chain No. Donghua Ketten Nr.	Pitch	Roller diameter	Width between inner plates	Pin diameter	Pin length		Plate depth		Plate thickness	Ultimate tensile strength	Weight per meter
	Teilung	Rollen-durchmesser	Innere Breite	Bolzen-durchmesser	L	Lc	Laschen-höhe		Laschen-dicke	Min. Bruchkraft	Gewicht
	P	d1 max	b1 min	d2 max	L max	Lc max	h max	h2 max	T max	Q min	q
	mm	mm	mm	mm	mm	mm	mm	mm	mm	kN/LB	kg/m
P31.75F1	31.75	19.05	9.80	5.08	19.2	22.5	18.0	25.5	1.60	20.0/4545	1.48
P63F10	63.00	42.00	23.00	11.11	50.0	53.0	29.4	44.4	4.80	80.0/17997	8.32
P100F59	100.00	40.00	25.00	14.50	61.0	67.5	23.0	40.0	6.30	100.0/22496	7.98
P101.6F10	101.60	50.00	30.00	14.27	64.0	68.5	30.0	50.0	6.40	180.0/40909	11.56
P152F49	152.40	63.50	34.00	15.60	-	82.0	38.1	65.0	8.00	160.0/35993	16.30
P160F2	160.00	60.00	38.00	20.00	-	80.0	36.0	60.0	6.00	190.0/43181	12.57
MT18F1-S-50	50.00	18.00	11.50	5.72	25.5	28.2	10.0	17.5	2.50	18.0/4050	1.36
MT18F3-P-50	50.00	25.00	11.50	5.72	24.0	26.4	16.5	25.0	2.03	18.0/4050	2.00
MT28F1-P-63	63.00	30.00	18.00	7.00	34.0	37.5	20.0	30.0	3.00	28.0/6300	3.40
MT40F-P-50	50.00	31.00	15.00	10.00	36.0	39.0	17.5	30.0	4.00	40.0/9000	4.33
MT40F1-P-63	63.00	30.00	16.00	8.50	37.0	40.0	19.0	30.0	4.00	40.0/9000	3.90
MT80F2-P-63	63.00	30.00	25.00	7.00	45.2	48.7	20.0	30.0	4.00	35.0/7875	4.58
MT40F3-P-80	80.00	36.00	20.00	8.50	42.5	46.5	22.5	35.0	4.00	40.0/9000	4.81
MT56F1-B-100	100.00	15.00	24.00	10.00	46.0	49.5	35.0	50.0	4.00	56.0/12600	3.38
MT80F2-P-100	100.00	50.00	28.00	14.35	55.0	59.5	32.5	51.5	5.00	120.0/26995	9.56

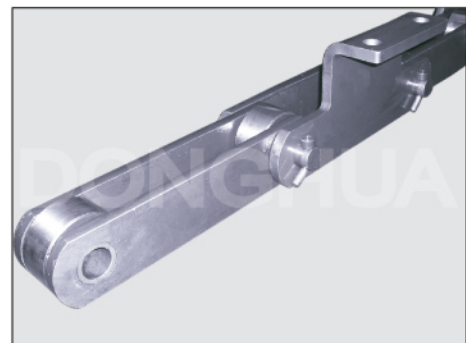
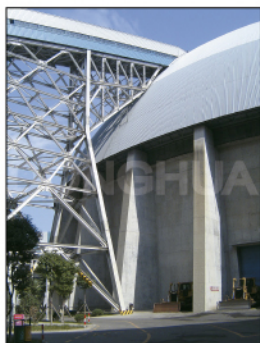
Conveyor chain with attachments Förderketten mit Befestigungslaschen

Conveyor chains for coal yards
P315F11 Förderketten für den Kohlenlagerplatz



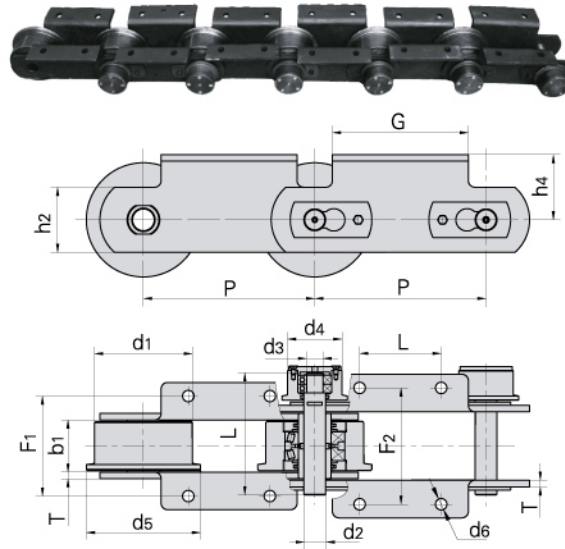
Donghua Chain No. Donghua Ketten Nr.	Pitch	Roller diameter	Width between inner plates	Pin diameter	Pin length	Plate thickness	Ultimate tensile strength	Average tensile strength
	Teilung	Rollen-durchmesser	Innere Breite	Bolzen-durchmesser	Bolzen-länge	Laschen-dicke	Min. Bruchkraft	Durchschn. Bruchkraft
	P	d1 max	b1 min	d2 max	Lc max	t/T	Q min	Q0
	mm	mm	mm	mm	mm	mm	kN	kN
P315F11	315	100	52	35	148	16	800	900

Donghua Chain No. Donghua Ketten Nr.	P	L	G	F	W	h4	h2	d4
	mm	mm	mm	mm	mm	mm	mm	mm
P315F11	315	130	190	100	130	140	85	25



Conveyor chain with attachments Förderketten mit Befestigungslaschen

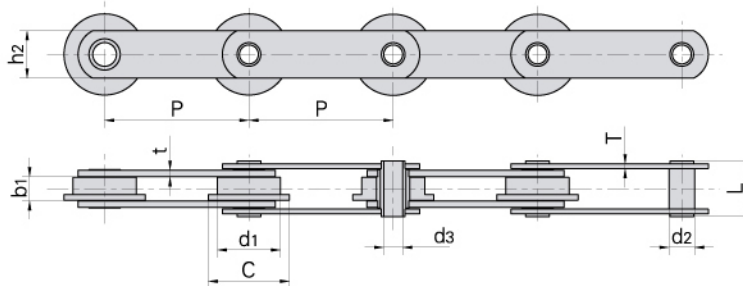
P315 conveyor chain
P315 Förderketten



Donghua Chain No. Donghua Ketten Nr.	P	L	G	F1	F2	h4	h2	d6	T
	mm	mm	mm	mm	mm	mm	mm	mm	mm
P315	315	150.0	250.0	180.0	206.0	120.0	120.0	21.0	12.0

Donghua Chain No. Donghua Ketten Nr.	Pitch	Roller diameter			Width between inner plates		Pin diameter		Pin length	Ultimate tensile strength	Average tensile strength
	Teilung	Rollen-durchmesser			Innere Breite		Bolzen-durchmesser		Bolzen-länge	Min. Bruchkraft	Durchschn. Bruchkraft
	P	d1 max	d4 max	d5 max	b1 min	d2 max	d3 max	L1 max	Q min	Q0	
	mm	mm	mm	mm	mm	mm	mm	mm	mm	kN/LB	kN
P315	315	180.0	100.0	210.0	90.0	40.0	30.0	217.0	100.0/22727	110.0	

Steel chains for sewage disposal Sonderketten für die Abwasserentsorgung



Donghua Chain No. Donghua Ketten Nr.	Pitch	Width between inner plates		Roller diameter		Pin diameter		Pin length	Plate depth	Plate thickness	Ultimate tensile strength	Average tensile strength	Weight per meter	
	Teilung	Innere Breite		Rollen-durchmesser		Bolzen-durchmesser		Bolzen-länge	Laschen-höhe	Laschen-dicke	Min. Bruchkraft	Durchschn. Bruchkraft	Gewicht	
	P	b1 min	d1 max	C max	d2 max	d3 mon	L max	h2 max	T max	t max	Q min	Q0	q	
	mm	mm	mm	mm	mm	mm	mm	mm	mm	mm	mm	kN/LB	kN	kg/m
W152	152.4	25.40	66.7	85.7	27.1	20.0	58.8	50.0	5.0	7.0	110.0/25000	122.1	10.78	