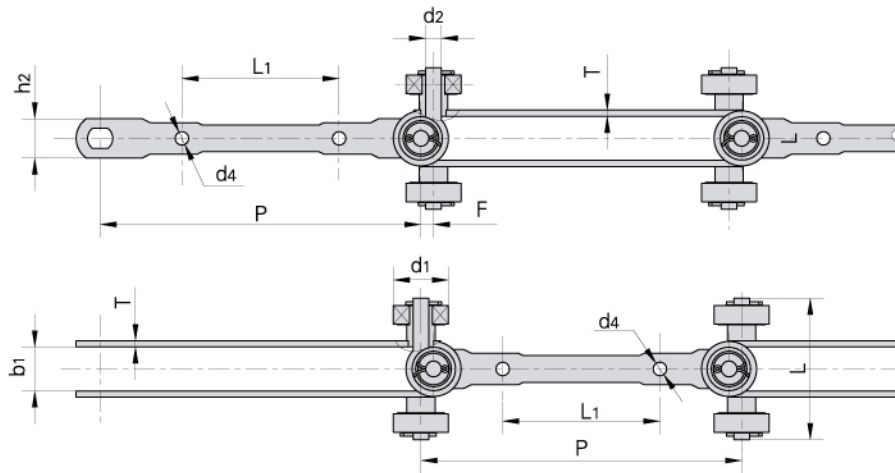


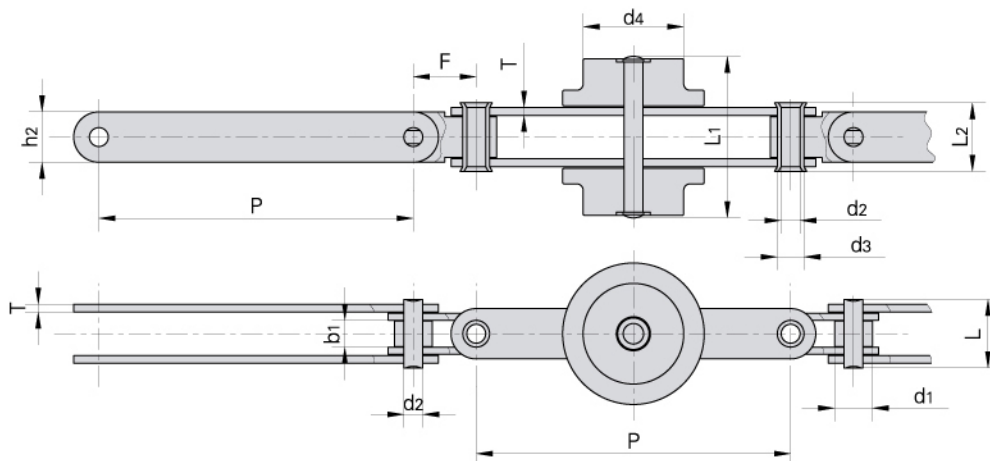
# Universal movement conveyor chains

## Kardanketten für Kreisförderer

FÖRDERKETTEN



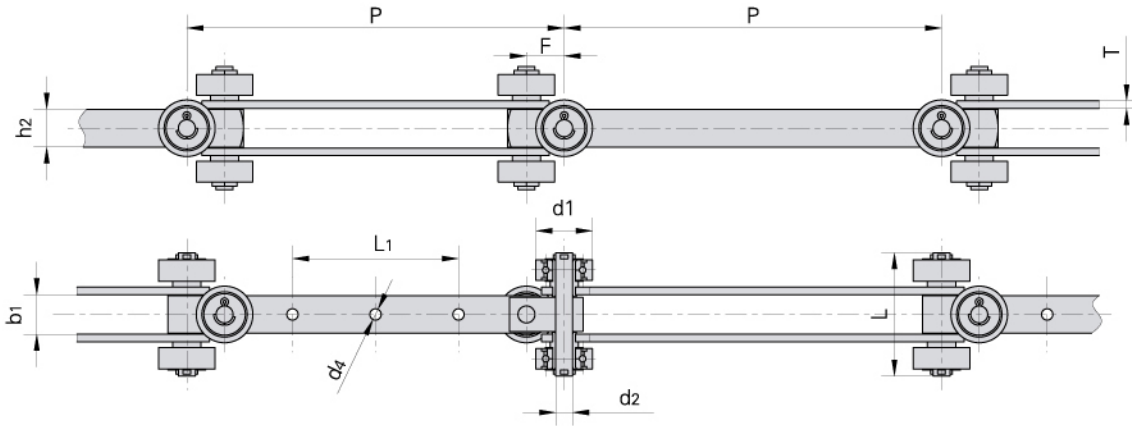
| Donghua Chain No.<br>Donghua Ketten Nr. | Pitch   | Roller diameter    | Width between inner plates | Pin diameter       | Pin length   | plate dimension     |       | Attachment dimension             |     |      | Ultimate tensile strength |
|---|---------|--------------------|----------------------------|--------------------|--------------|---------------------|-------|----------------------------------|-----|------|---------------------------|
|   | Teilung | Rollen-durchmesser | Innere Breite              | Bolzen-durchmesser | Bolzen-länge | Laschen-abmessungen |       | Befestigungs-laschen-abmessungen |     |      | Min. Bruchkraft           |
|   | P       | d1 max             | b1 min                     | d2 max             | L max        | h2 max              | T max | L1                               | d4  | F    | Q min                     |
|   | mm      | mm                 | mm                         | mm                 | mm           | mm                  | mm    | mm                               | mm  | mm   | kN/LB                     |
| P210                                    | 204.0   | 35.0               | 27.5                       | 10.0               | 90.0         | 25.0                | 4.0   | 100.0                            | 8.5 | 8.0  | 50.0/11364                |
| SJ406S-50                               | 203.2   | 35.0               | 27.5                       | 10.0               | 90.0         | 25.0                | 4.0   | 100.0                            | 8.5 | 11.0 | 50.0/11364                |



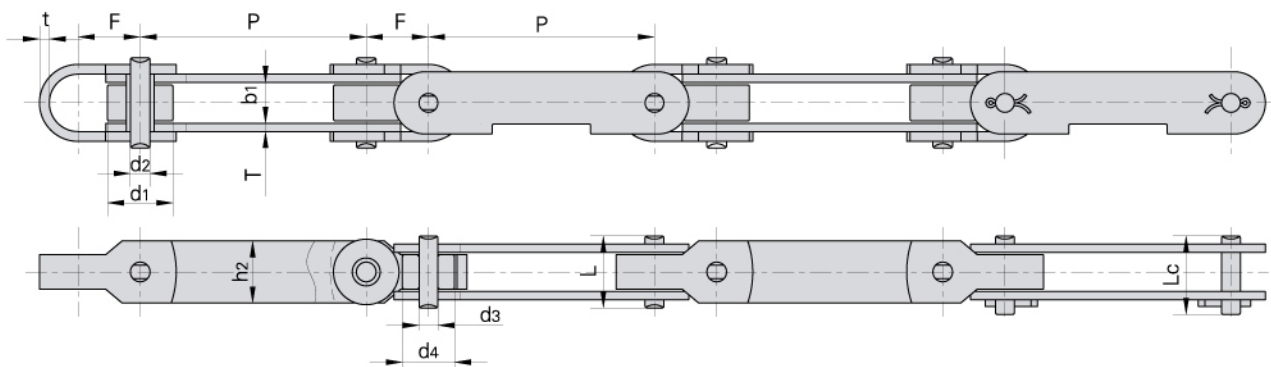
| Donghua Chain No.<br>Donghua Ketten Nr. | Pitch   | Roller diameter    |        | Width between inner plates | Pin diameter       |     | Pin length   |        |        | plate dimension     |       | Attachment dimension             |           | Ultimate tensile strength |
|---|---------|--------------------|--------|----------------------------|--------------------|-----|--------------|--------|--------|---------------------|-------|----------------------------------|-----------|---------------------------|
|   | Teilung | Rollen-durchmesser |        | Innere Breite              | Bolzen-durchmesser |     | Bolzen-länge |        |        | Laschen-abmessungen |       | Befestigungs-laschen-abmessungen |           | Min. Bruchkraft           |
|   | P       | d1 max             | d4 max | b1 min                     | d2                 | d3  | L max        | L1 max | L2 max | h2 max              | T max | F                                | Q min     |                           |
|   | mm      | mm                 | mm     | mm                         | mm                 | mm  | mm           | mm     | mm     | mm                  | mm    | mm                               | kN/LB     |                           |
| P100F11                                 | 100.0   | 12.0               | 32.0   | 8.6                        | 6.0                | 8.5 | 22.0         | 53.0   | 22.0   | 16.0                | 2.5   | 20.0                             | 20.0/4545 |                           |

# Universal movement conveyor chains

## Kardanketten für Kreisförderer



| Donghua Chain No.<br>Donghua Ketten Nr. | Pitch   | Roller diameter    | Width between inner plates | Pin diameter       | Pin length   | plate dimension     |       | Attachment dimension             |       |      | Ultimate tensile strength |
|---|---------|--------------------|----------------------------|--------------------|--------------|---------------------|-------|----------------------------------|-------|------|---------------------------|
|   | Teilung | Rollen-durchmesser | Innere Breite              | Bolzen-durchmesser | Bolzen-länge | Laschen-abmessungen |       | Befestigungs-laschen-abmessungen |       |      | Min. Bruchkraft           |
|   | P       | d1 max             | b1 min                     | d2 max             | L max        | h2 max              | T max | L1                               | d4    | F    | Q min                     |
|   | mm      | mm                 | mm                         | mm                 | mm           | mm                  | mm    | mm                               | mm    | mm   | kN/LB                     |
| SJ400-40                                | 200.0   | 30.0               | 20.0                       | 9.0                | 65.0         | 20.0                | 3.0   | 88.0                             | 6.44  | 20.0 | 15.0/3374                 |
| SJ400-60                                | 200.0   | 35.0               | 21.0                       | 10.0               | 64.5         | 20.0                | 4.0   | 88.0                             | 6.50  | 20.0 | 60.0/13497                |
| SJ400-100                               | 200.0   | 40.0               | 26.0                       | 14.0               | 75.0         | 30.0                | 4.0   | 88.0                             | 10.00 | 25.0 | 100.0/22495               |
| SJ405S-60                               | 203.2   | 47.0               | 30.0                       | 14.0               | 95.0         | 30.0                | 4.0   | 76.2                             | 8.40  | 16.5 | 50.0/11247                |



| Donghua Chain No.<br>Donghua Ketten Nr. | Pitch   | Roller diameter    | Width between inner plates | Pin diameter       | Pin length   | plate dimension     |       | Attachment dimension             |        | Attachment dimension             |      | Ultimate tensile strength |           |
|---|---------|--------------------|----------------------------|--------------------|--------------|---------------------|-------|----------------------------------|--------|----------------------------------|------|---------------------------|-----------|
|   | Teilung | Rollen-durchmesser | Innere Breite              | Bolzen-durchmesser | Bolzen-länge | Laschen-abmessungen |       | Befestigungs-laschen-abmessungen |        | Befestigungs-laschen-abmessungen |      | Min. Bruchkraft           |           |
|   | P       | d1 max             | d4 max                     | b1 min             | d2           | d3                  | L max | Lc max                           | h2 max | T max                            | F    | t                         | Q min     |
|   | mm      | mm                 | mm                         | mm                 | mm           | mm                  | mm    | mm                               | mm     | mm                               | mm   | mm                        | kN/LB     |
| P69F2                                   | 69.0    | 20.0               | 15.9                       | 8.6                | 6.0          | 5.72                | 22.0  | 24.0                             | 19.0   | 2.5                              | 19.0 | 3.0                       | 20.0/4545 |