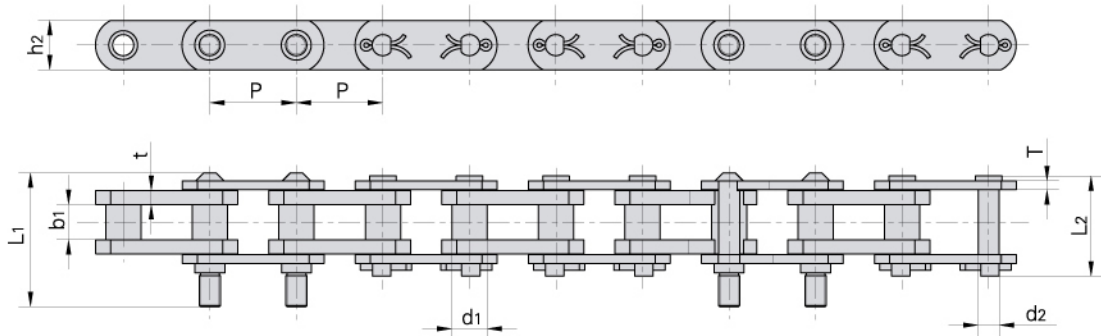


# 78PF1 conveyor chains

## 78PF1 Förderketten

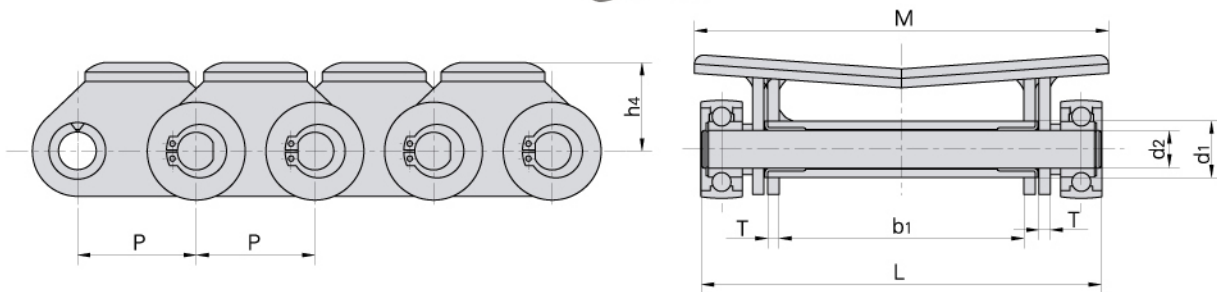
FÖRDERKETTEN



Donghua Chain No. Donghua Ketten Nr.	Pitch	Bush diameter	Width between inner plates	Pin diameter	Pin length		Plate depth	Plate thickness	Ultimate tensile strength	Average tensile strength	Weight per meter
	Teilung	Buchsen-durchmesser	Innere Breite	Bolzen-durchmesser	Bolzen-länge		Laschen-höhe	Laschen-dicke	Min. Bruchkraft	Durchschn. Bruchkraft	Gewicht
	P	d1 max	b1 min	d2 max	L1 max	L2 max	h2 max	t/T max	Q min	Q0 min	q
	mm	mm	mm	mm	mm	mm	mm	mm	kN/LB	kN	kg/m
78PF1	78.1	31.75	31.75	19.05	122.0	90.5	44.5	12.7/8.0	140.0/31818	166.88	14.22

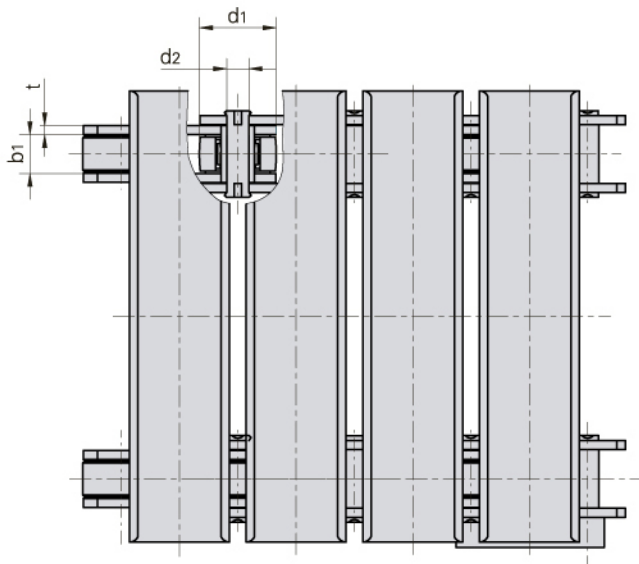
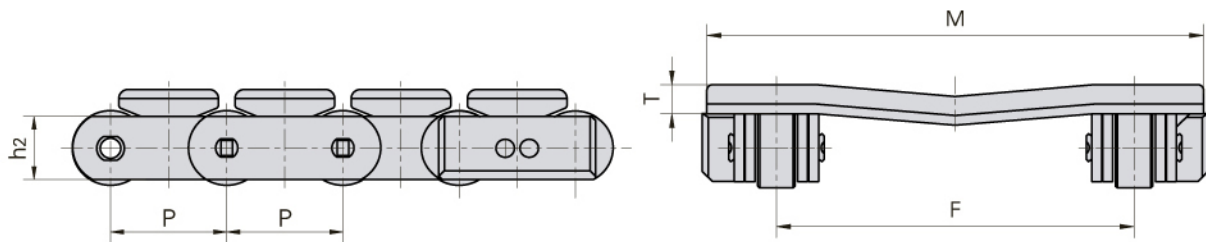
# Conveyor chains for paper mill

## Förderketten für die Papierindustrie



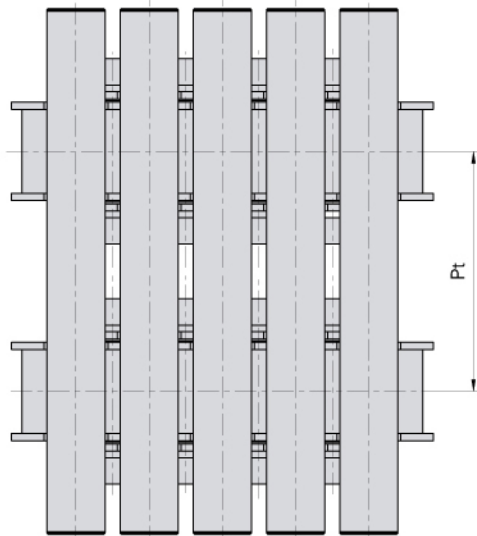
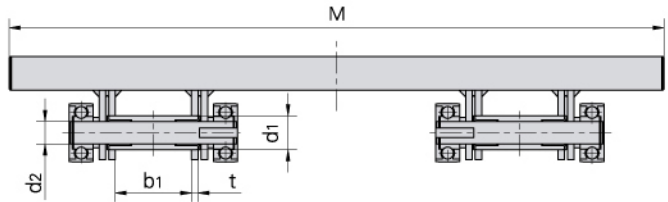
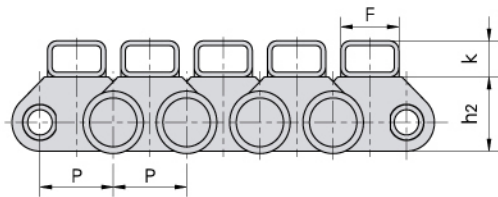
Donghua Chain No. Donghua Ketten Nr.	Pitch	Bush diameter	Width between inner plates	Pin diameter	Pin length	Plate thickness	Attachment dimension		Ultimate tensile strength	Average tensile strength
	Teilung	Buchsen-durchmesser	Innere Breite	Bolzen-durchmesser	Bolzen-länge	Laschen-dicke	Befestigungs-laschen-abmessungen		Min. Bruchkraft	Durchschn. Bruchkraft
	P	d1 max	b1 min	d2 max	L max	T max	M	h4	Q min	Q0 min
	mm	mm	mm	mm	mm	mm	mm	mm	kN/LB	kN
63PF2	63.0	30.0	130.0	20.0	213.2	6.0	220.0	50.0	160.0/36364	176.0

# Conveyor chains for paper mill Förderketten für die Papierindustrie



Donghua Chain No. Donghua Ketten Nr.	Pitch	Width between inner plates	Pin diameter	Roller diameter	Plate depth	Plate thickness	Attachment dimension			Ultimate tensile strength
	Teilung	Innere Breite	Bolzen-durchmesser	Rollen-durchmesser	Laschen-höhe	Laschen-dicke	Befestigungs-laschen-abmessungen			Min. Bruchkraft
	P	b1 min	d2 max	d1 max	h2 max	t max	F	T	M	Q min
	mm	mm	mm	mm	mm	mm	mm	mm	mm	kN
P63F16	63.0	21.5	12.0	42.0	35.0	5.0	180.0	15.0	250.0	120.0

# Conveyor chains for paper mill Förderketten für die Papierindustrie



Donghua Chain No. Donghua Ketten Nr.	Pitch	Width between inner plates	Pin diameter	Bush diameter	Plate depth	Plate thickness	Attachment dimension				Ultimate tensile strength
	Teilung	Innere Breite	Bolzen-durchmesser	Buchsen-durchmesser	Laschen-höhe	Laschen-dicke	Befestigungs-laschen-abmessungen				Min. Bruchkraft
	P	b1 min	d2 max	d1 max	h2 max	t max	F	K	Pt	M	Q min
	mm	mm	mm	mm	mm	mm	mm	mm	mm	mm	kN
P63F23	63.0	70.0	20.0	52.0	61.8	6.0	50.0	30.0	688.0	1200.0	160.0