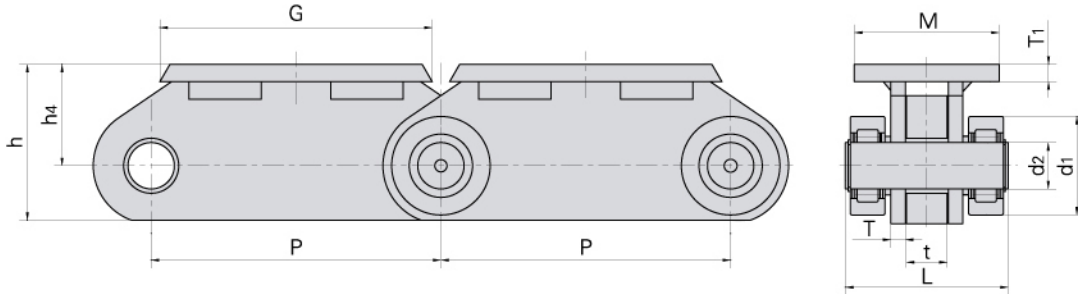


CONVEYOR CHAINS FOR STEEL MILL
FÖRDERKETTEN FÜR DIE STAHLINDUSTRIE

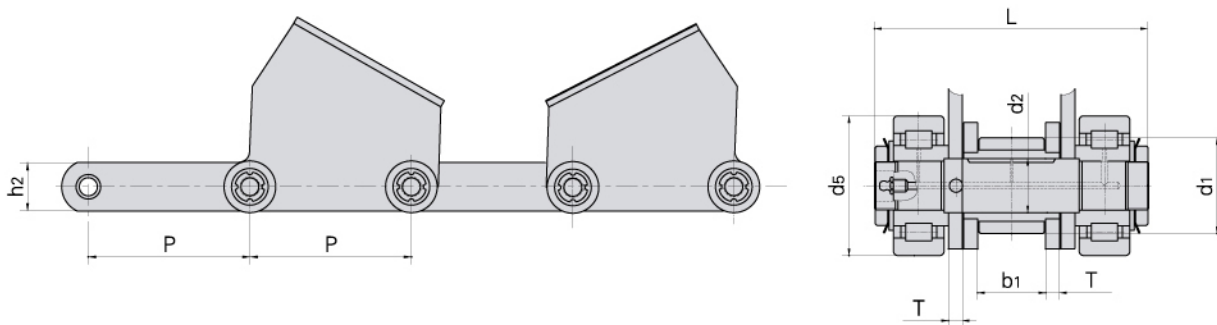


Conveyor chains for steel mill

Förderketten für die Stahlindustrie



Donghua Chain No. Donghua Ketten Nr.	Pitch	Roller diameter	Pin diameter	Pin length	Plate thickness	Attachment dimension					Ultimate tensile strength
	Teilung	Rollen-durchmesser	Bolzen-durchmesser	Bolzen-länge	Laschen-dicke	Befestigungs-laschen-abmessungen					Min. Bruchkraft
	P	d1 max	d2 max	L max	t/T max	G	M	h4	h	T1	Q min
	mm	mm	mm	mm	mm	mm	mm	mm	mm	mm	kN/LB
P500	500	170	80	281	50/25	470	250	175	269	30	1900/427419

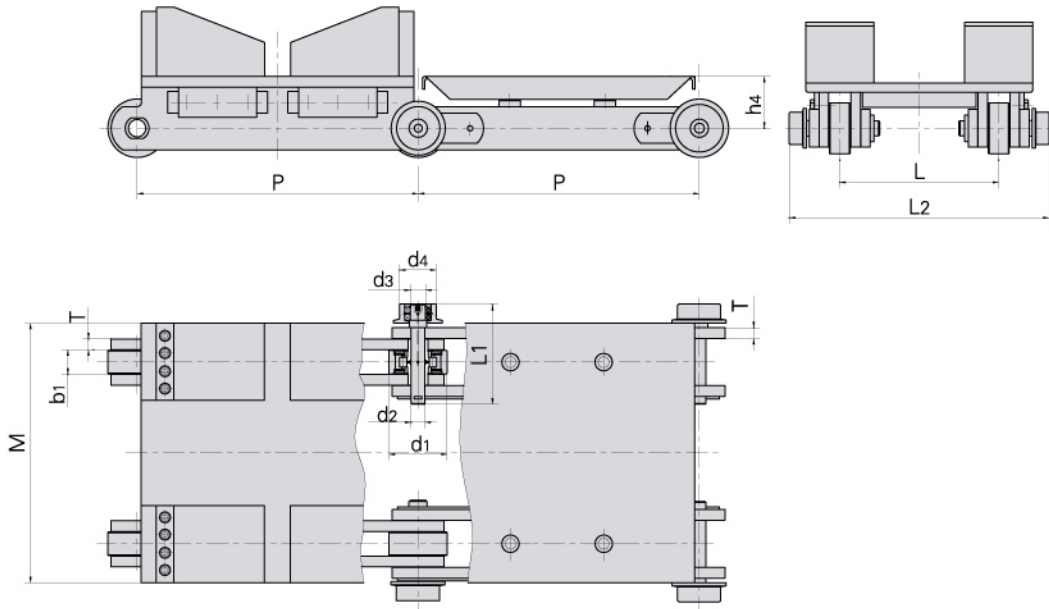


Donghua Chain No. Donghua Ketten Nr.	Pitch	Roller diameter	Width between inner plates	Pin diameter	Pin length	Plate thickness	Plate depth	Ultimate tensile strength	
	Teilung	Rollen-durchmesser	Innere Breite	Bolzen-durchmesser	Bolzen-länge	Laschen-dicke	Laschen-höhe	Min. Bruchkraft	
	P	d1 max	d5 max	b1 min	d2 max	L max	T max	h2	Q min
	mm	mm	mm	mm	mm	mm	mm	kN/LB	
P500F1	500	107	160	78	62	325	20	150	800/179966

Conveyor chains for steel mill

Förderketten für die Stahlindustrie

FÖRDERKETTEN

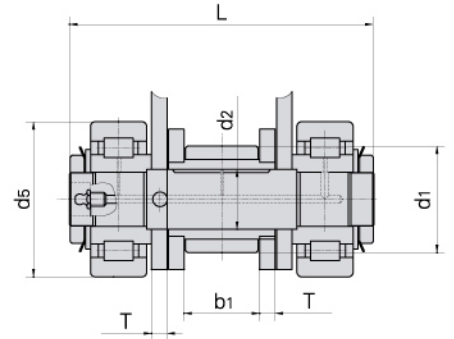
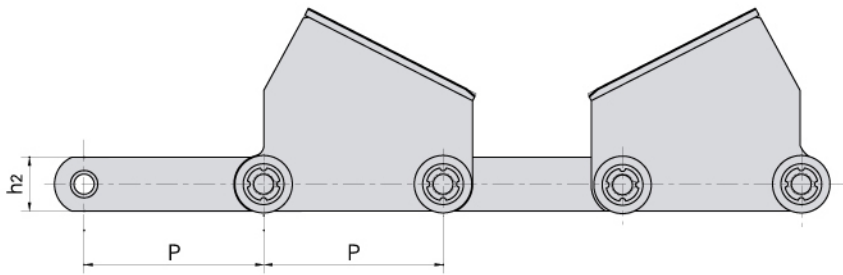


Donghua Chain No. Donghua Ketten Nr.	Pitch	Roller diameter		Width between inner plates	Pin diameter		Pin length	Plate thickness	Attachment dimension				Ultimate tensile strength	Weight per meter
	Teilung	Rollen-durchmesser		Innere Breite	Bolzen-durchmesser		Bolzen-länge	Laschen-dicke	Befestigungs-laschen-abmessungen				Min. Bruchkraft	Gewicht
	P	d1 max	d4 max	b1 min	d2 max	d3 max	L1 max	T max	L	L2	M	h4	Q min	q
	mm	mm	mm	mm	mm	mm	mm	mm	mm	mm	mm	mm	kN/LB	kg/m
P650	650	135	85	56	32	35	232	25	420	690	600	120	750/168718	214.5

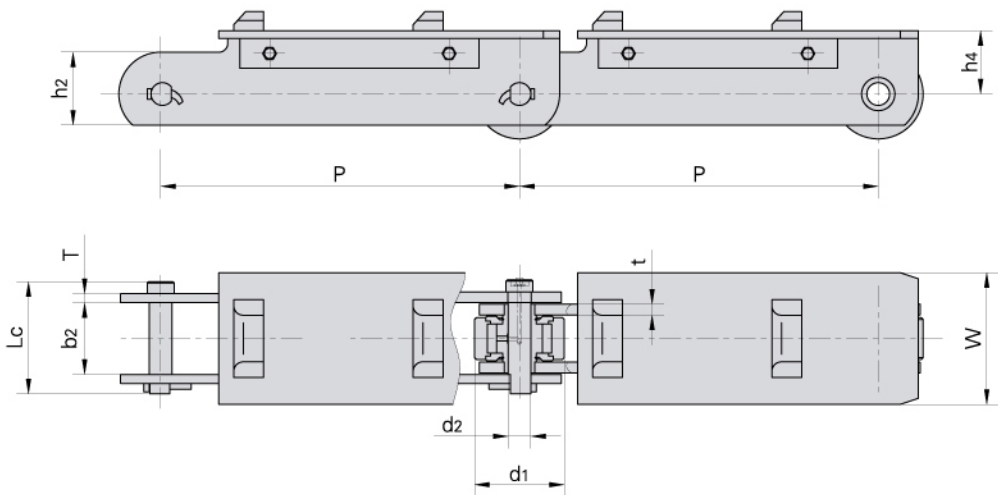


Conveyor chains for steel mill

Förderketten für die Stahlindustrie



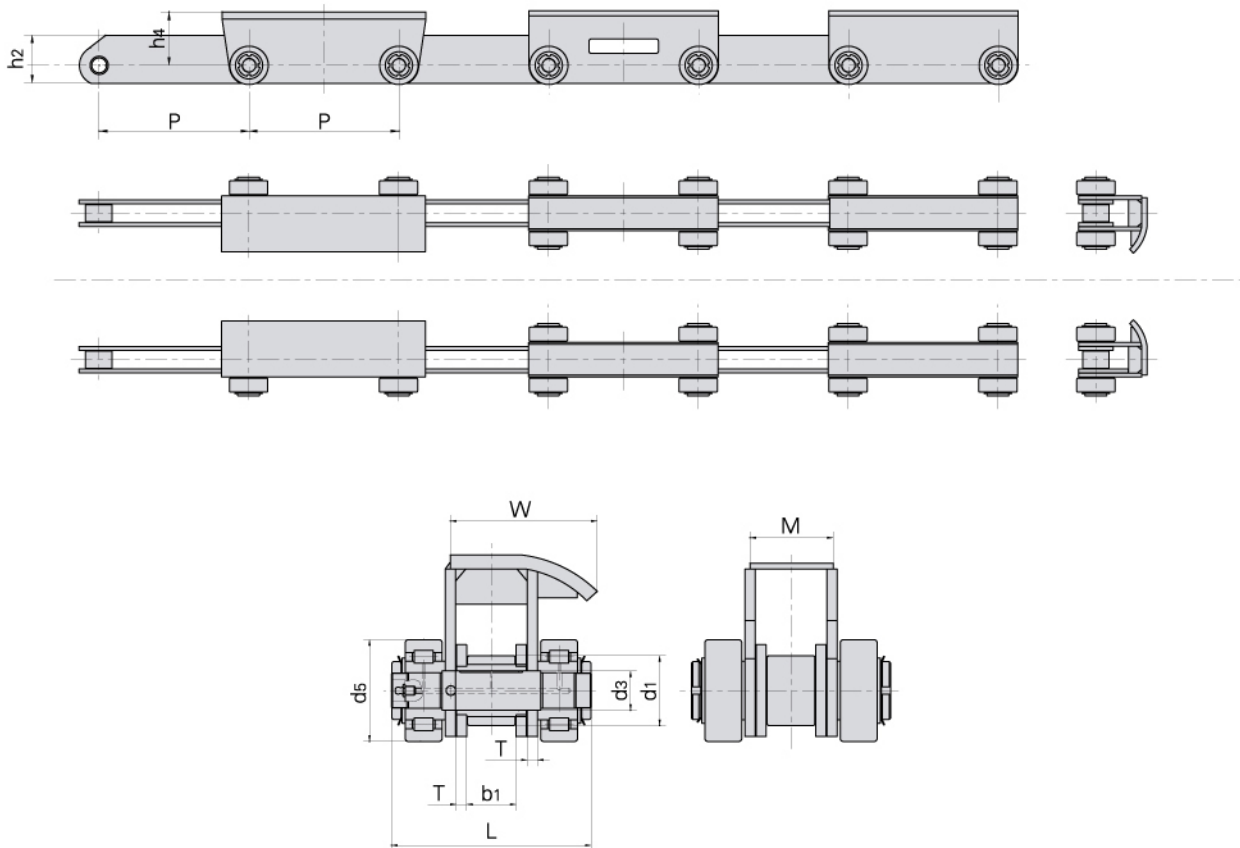
Donghua Chain No. Donghua Ketten Nr.	Pitch	Roller diameter		Width between inner plates	Pin diameter	Pin length	Plate thickness	Plate depth	Ultimate tensile strength
	Teilung	Rollen-durchmesser		Innere Breite	Bolzen-durchmesser	Bolzen-länge	Laschen-dicke	Laschen-höhe	Min. Bruchkraft
	P	d1 max	d5 max	b1 min	d2 max	L max	T max	h2	Q min
	mm	mm	mm	mm	mm	mm	mm	mm	kN/LB
P500F2	500	107	160	76	62	310	16	150	700/157470



Donghua Chain No. Donghua Ketten Nr.	Pitch	Roller diameter	Width between outer plates	Pin diameter	Pin length	Plate depth	Plate thickness	Attachment dimension		Average tensile strength
	Teilung	Rollen-durchmesser	Breite zwischen den Außenlaschen	Bolzen-durchmesser	Bolzen-länge	Laschen-höhe	Laschen-dicke	Befestigungs-laschen-abmessungen		Durchschn. Bruchkraft
	P	d1 max	b2 min	d2 max	Lc max	h2	t/T max	h4	W	Q0
	mm	mm	mm	mm	mm	mm	mm	mm	mm	kN/LB
P600F1	600	150	117	38	187	122	18/15	105.7	220	1470/330687

Conveyor chains for steel mill

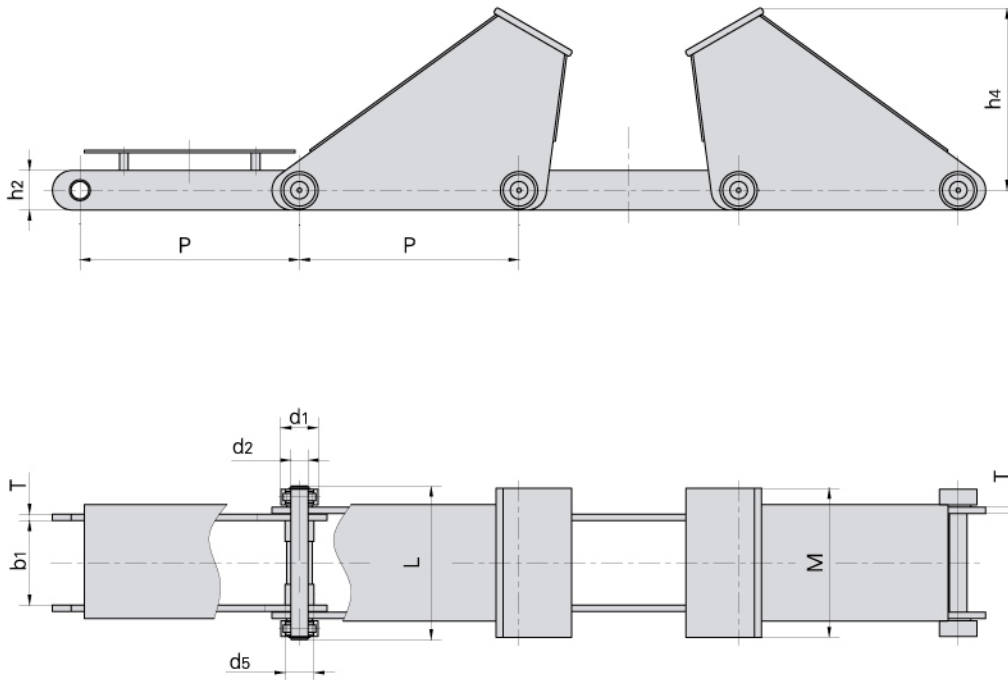
Förderketten für die Stahlindustrie



Donghua Chain No. Donghua Ketten Nr.	Pitch	Roller diameter		Width between inner plates	Pin diameter	Pin length	Plate thickness	Attachment dimension				Ultimate tensile strength
	Teilung	Rollen-durchmesser		Innere Breite	Bolzen-durchmesser	Bolzen-länge	Laschen-dicke	Befestigungs-laschen-abmessungen				Min. Bruchkraft
	P	d1 max	d5 max	b1	d3 max	L max	T max	W	M	h2	h4	Q min
	mm	mm	mm	mm	mm	mm	mm	mm	mm	mm	mm	kN/LB
P625	625	107	160	78	62	310	16	227.5	130	200	215	700/157470

Conveyor chains for steel mill

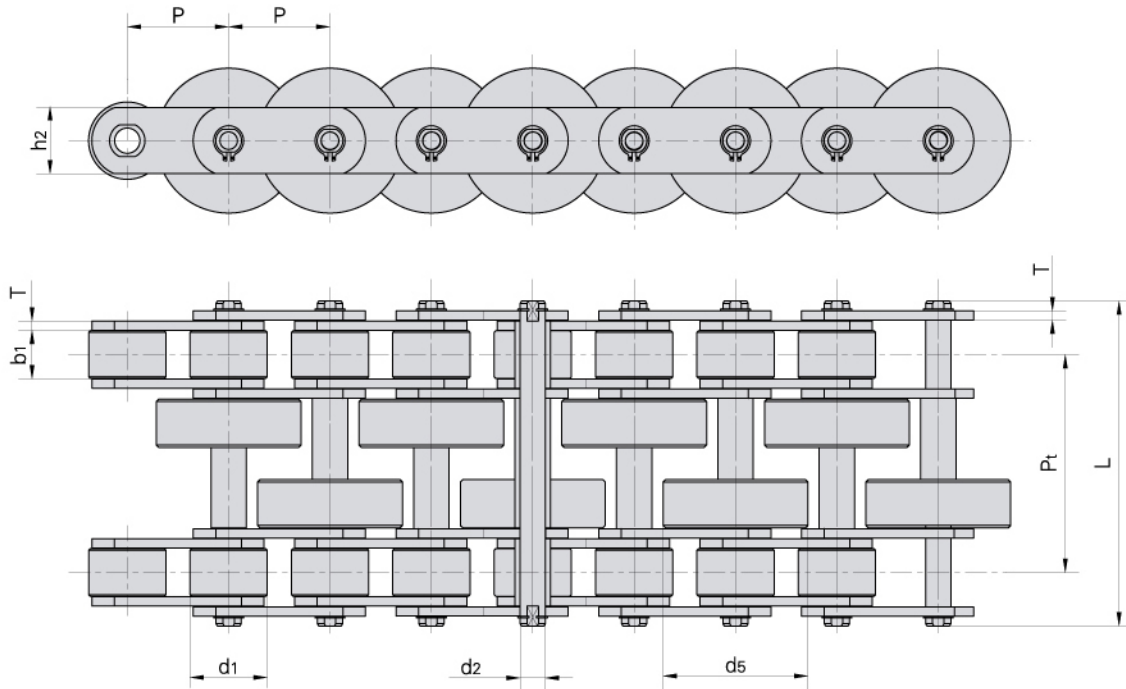
Förderketten für die Stahlindustrie



Donghua Chain No. Donghua Ketten Nr.	Pitch	Roller diameter		Width between inner plates	Pin diameter	Plate depth	Pin length	Plate thickness	Attachment dimension		Ultimate tensile strength
	Teilung	Rollen-durch-messer		Innere Breite	Bolzen-durch-messer	Laschen-höhe	Bolzen-länge	Laschen-dicke	Befestigungs-laschen-abmessungen		Min. Bruchkraft
	P	d1 max	d5 max	b1 min	d2 max	h2	L max	T max	h4	M	Q min
	mm	mm	mm	mm	mm	mm	mm	mm	mm	mm	kN/LB
P1000	1000	170	110	384	80	180	678	30	832	680	1800/404923

Conveyor chains for steel mill

Förderketten für die Stahlindustrie



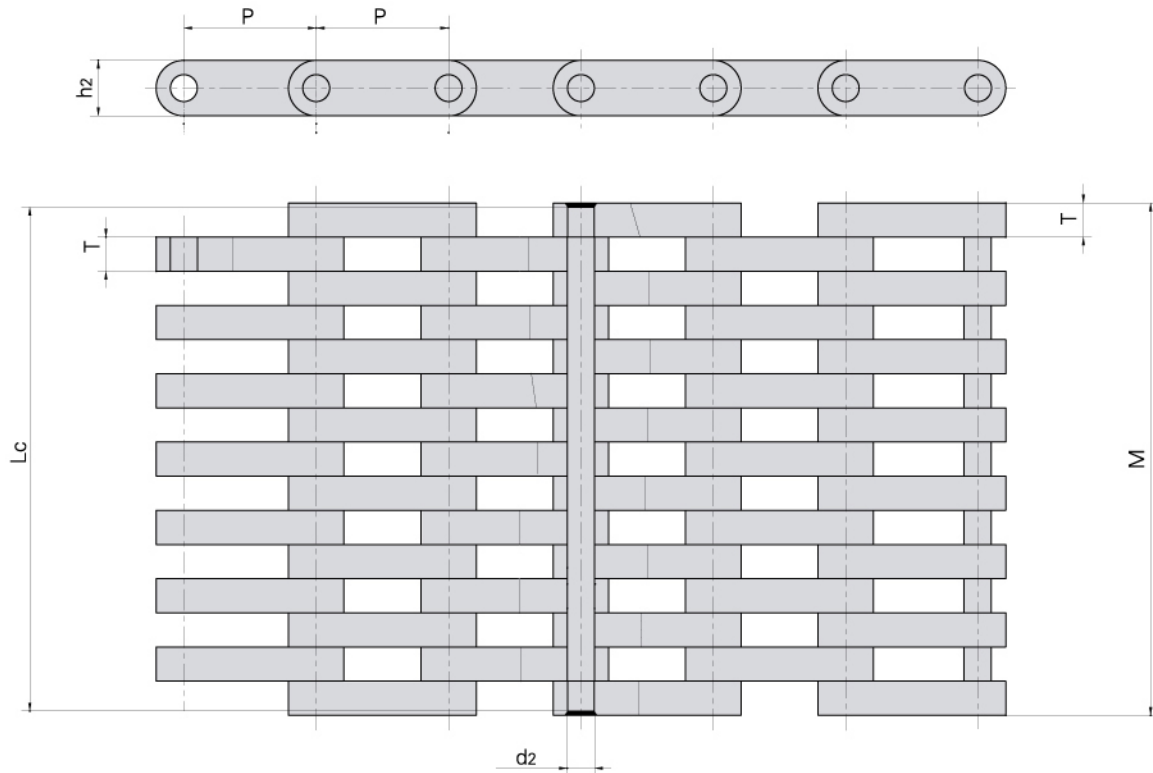
FÖRDERKETTEN

Donghua Chain No. Donghua Ketten Nr.	Pitch	Roller diameter		Width between inner plates	Pin diameter	Pin length	Plate thickness	Plate depth	Transverse pitch	Ultimate tensile strength	Weight per meter
	Teilung	Rollen-durchmesser		Innere Breite	Bolzen-durchmesser	Bolzen-länge	Laschen-dicke	Laschen-höhe	Mitten-abstand	Min. Bruchkraft	Gewicht
	P mm	d1 max mm	d5 max mm	b1 min mm	d2 max mm	L max mm	T max mm	h2 max mm	Pt mm	Q min kN/LB	q Kg/m
P63F4	63	48	90	30	15.88	202	6	41	135	200/44991	36.57



Conveyor chains for steel mill

Förderketten für die Stahlindustrie



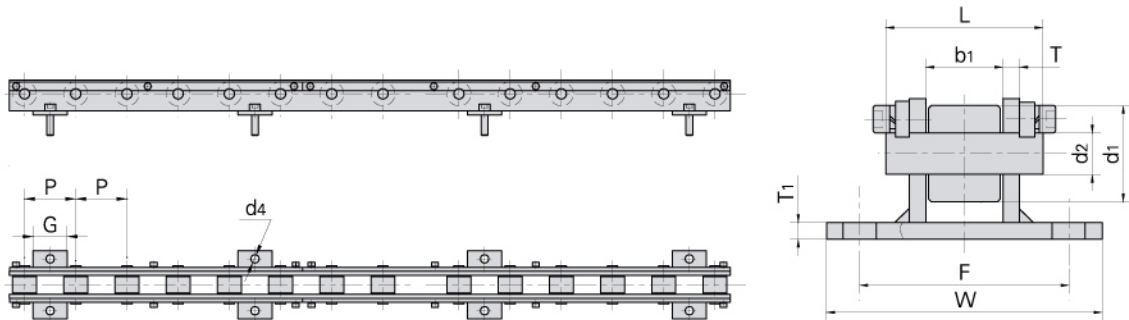
FÖRDERKETTEN

	Pitch	Plate lacing	Pin diameter	Pin length	Plate thickness	Plate dimension		Ultimate tensile strength	Average tensile strength	Weight per meter
Donghua Chain No.	<i>Teilung</i>	<i>Laschen Kombination</i>	<i>Bolzen-durchmesser</i>	<i>Bolzen-länge</i>	<i>Laschen-dicke</i>	<i>Laschen-abmessungen</i>		<i>Min. Bruchkraft</i>	<i>Durchschn. Bruchkraft</i>	<i>Gewicht</i>
Donghua Ketten Nr.	P		d2 max	Lc max	T max	h2	M	Q min	Q0	q
	mm		mm	mm	mm	mm	mm	kN/LB	kN/LB	kg/m
LF155	155	7x8	31.5	595	40	65	605	3200/719864	3520/791851	202.2

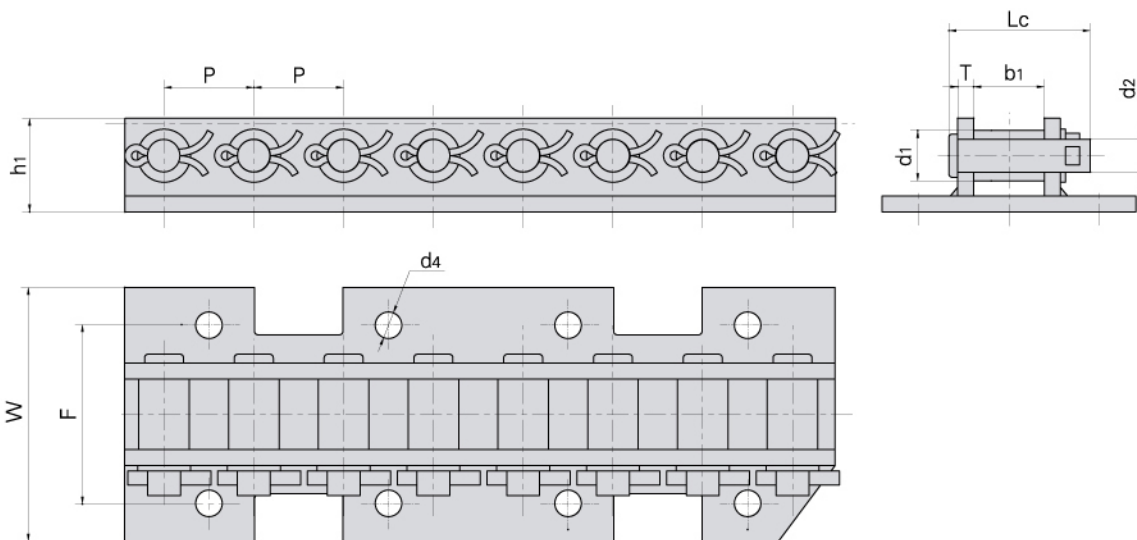


Conveyor chains for steel mill

Förderketten für die Stahlindustrie



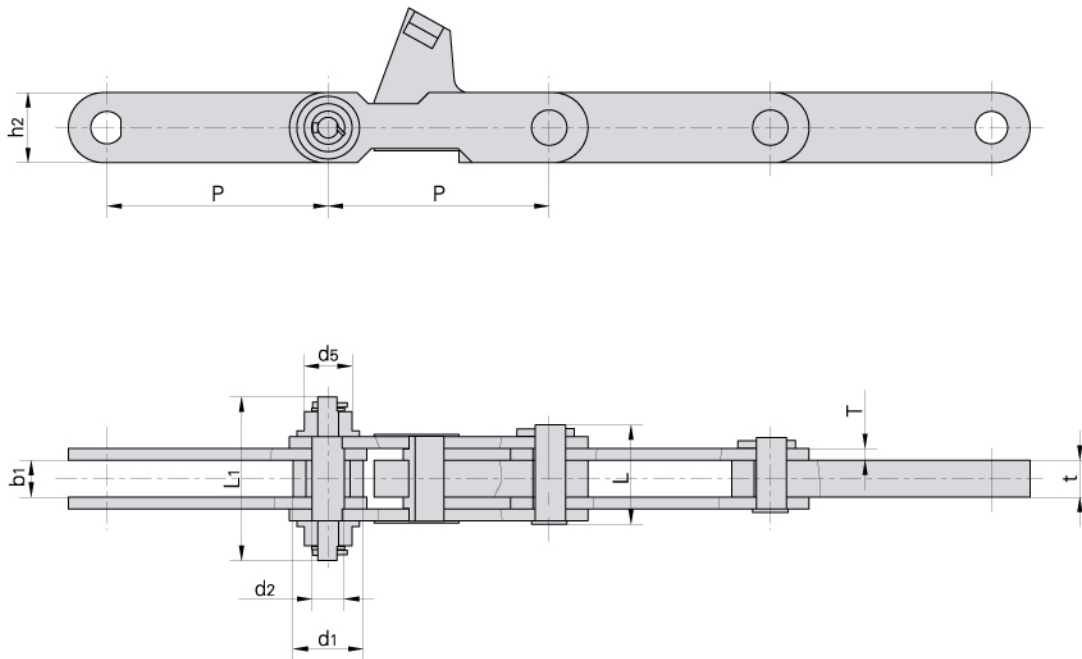
Donghua Chain No. Donghua Ketten Nr.	Pitch	Roller diameter	Width between inner plates	Pin diameter	Pin length	Plate thickness	Attachment dimension					Weight per meter
	Teilung	Rollen-durchmesser	Innere Breite	Bolzen-durchmesser	Bolzen-länge	Laschen-dicke	Befestigungs-laschen-abmessungen					Gewicht
	P	d1 max	b1	d2 max	L max	T max	T1	W	F	d4	G	q
	mm	mm	mm	mm	mm	mm	mm	mm	mm	mm	mm	Kg/m
P75F9	75	35	28	15	56	6	6	100	76	12	75	22.3



Donghua Chain No. Donghua Ketten Nr.	Pitch	Roller diameter	Width between inner plates	Pin diameter	Pin length	Plate thickness	Attachment dimension					Ultimate tensile strength	Weight per meter
	Teilung	Rollen-durchmesser	Innere Breite	Bolzen-durchmesser	Bolzen-länge	Laschen-dicke	Befestigungs-laschen-abmessungen					Min. Bruchkraft	Gewicht
	P	d1 max	b1	d2 max	Lc max	T max	F	W	d4	h1	Q min	q	
	mm	mm	mm	mm	mm	mm	mm	mm	mm	mm	kN/LB	kg/m	
P50.8F10	50.8	28.6	40	18.5	80	9	101.6	143.6	15	53	193/43416	11.2	

Conveyor chains for steel mill

Förderketten für die Stahlindustrie



Donghua Chain No. Donghua Ketten Nr.	Pitch	Roller diameter		Width between inner plates	Pin diameter	Pin length		Plate thickness	Ultimate tensile strength
	<i>Teilung</i>	<i>Rollen-durchmesser</i>		<i>Innere Breite</i>	<i>Bolzen-durchmesser</i>	<i>Bolzen-länge</i>		<i>Laschen-dicke</i>	<i>Min. Bruchkraft</i>
	P	d1 max	d5 max	b1 min	d2 max	L max	L1 max	t/T max	Q min
	mm	mm	mm	mm	mm	mm	mm	mm	kN/LB
P300F5	300	95	65	50	44	135	222	50/16	500/112478